

**City of Negaunee
PO Box 70
319 W. Case Street
Negaunee, MI 49866
906 475-9991**

INVITATION FOR BIDS

INVITATION FOR BIDS

Sealed bids will be received by the City of Negaunee located at 319 W. Case Street, Negaunee, Michigan, 49866 until 1:00PM, April 24, 2023, for **Custom Iron and Artwork** for the Negaunee Downtown Enhancement Project.

Bid shall be submitted and addressed to the Negaunee City Clerk, City of Negaunee, PO Box 70, 319 W. Case Street, Negaunee, MI 49866. Envelope shall be sealed and clearly marked "**Bid for Custom Iron and Artwork**"– Negaunee Downtown Enhancement Project." Bids must be received before or by the above date and time. No fax or email bids will be accepted.

Bids will be opened on April 24, 2023, at 1:00PM at **319 W. Case Street (City Hall), second floor conference room.**

The City reserves the right to accept any or all bids or accept any part of a bid. Each of the items may be purchased individually or as a lump sum bid.

BID FORM

Vendor: _____

Address: _____

| City of Negaunee – Streetlight Vendor | | | | |
|--|-----------------|-------------|-------------------|--------------------|
| Item Description | Quantity | Unit | Unit Price | Total Price |
| Item 1 (include installation) | | Each | | |
| Item 2 (include installation) | | Each | | |
| Item 3 (include installation) | | Each | | |
| Item 4 (include installation) | | Each | | |
| Item 5: (3-sided include installation) | | Each | | |
| Item 5: (2-sided include installation) | | Each | | |
| Item 5: (Single-Sided include installation) | | Each | | |
| Item 6 (include installation) | | Each | | |
| Item 7 (total shipping) | | | | |
| Total Artist Fees #3, #4, #6 | | | | |

TOTAL BID

| |
|-----------|
| \$ |
|-----------|

(words)

Item 1: Triangular Light Columns

The work will consist of providing and installing six (6) triangular light columns as specified below. Delivery and installation included in bid.

Structure: ASTM A588 Class Weathering Steel, 4mm, Sandblasted surface prior to delivery to accelerate weathering process.

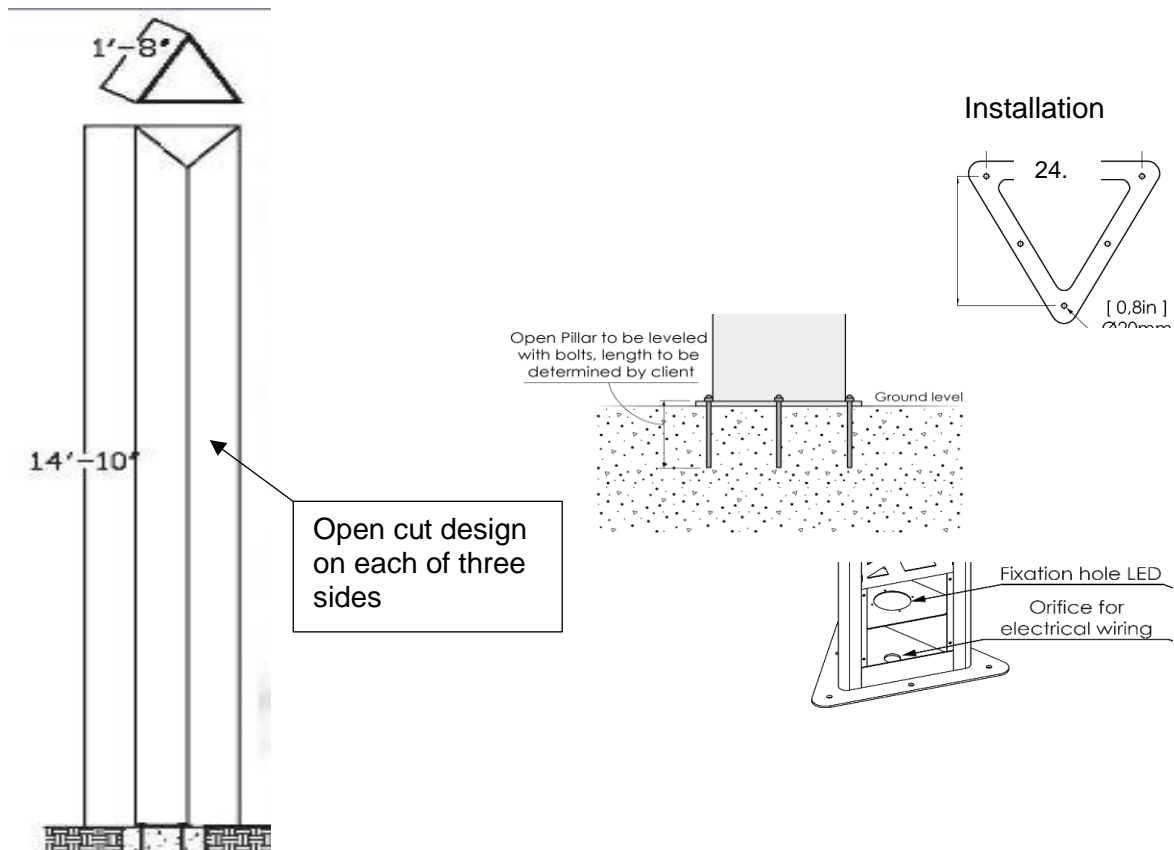
Height 14', Width 10", Equilateral Triangle 20"

Base includes terminal box with uplighter.

Columns will feature custom laser cut decorative pattern. Pattern to be determined by owner.

Column top will include fixture for attaching decorative "Edison" lighting.

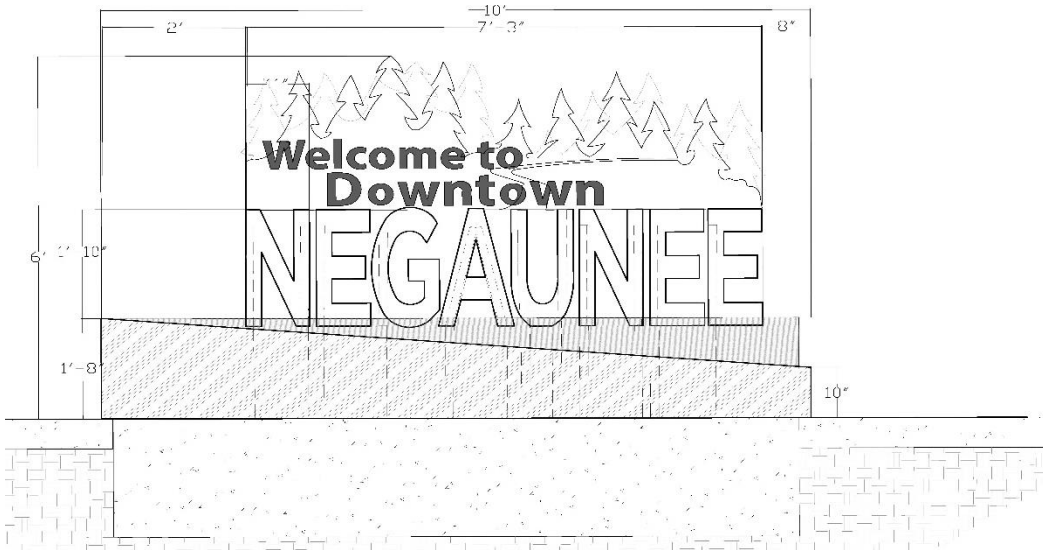
Mounting: Pillars are surface mounted to concrete surface using a triangular metal base provided as part of this contract. Steel base plate is 12mm thick. Fixation holes for bolts up to M16 or a determined by conditions.



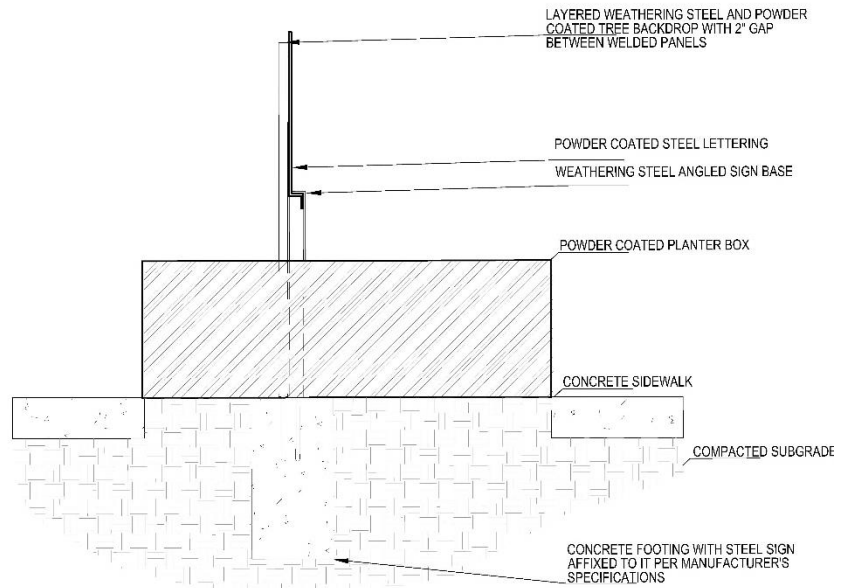
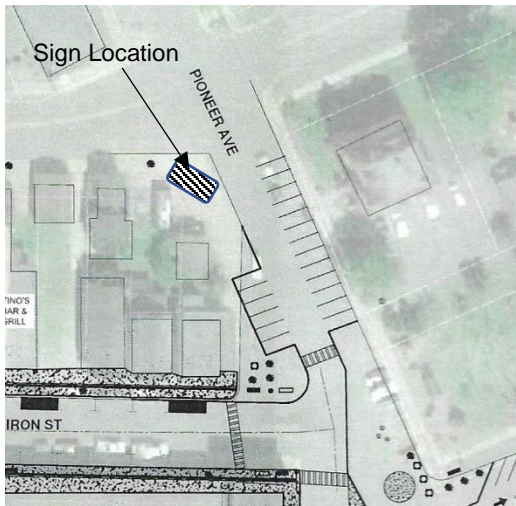
Item 2

The work will consist of design, manufacturing, and installation of Entry Sign as specified below. Final design to be approved by owner. Delivery and installation included in bid.

Layered ASTM A588 Class Weathering Steel and Powder Coated Backdrop. Steel sandblasted surface prior to delivery to accelerate weathering process. Concrete footing prepared and installed by others.



DOWNTOWN ENTRANCE SIGN



Item 3

Artistic Treatment to Rail Street Concrete Wing Walls.

Description: Design, execution, and installation of Bas-relief treatment to existing concrete walls located on overpass between Silver and Rail Street. Treatment will be applied to Rail Street side of walls. Product composition to be specified by artist/contractor Final design to be approved by owner. item shall include all artist fees, materials, and installation. Bid shall be quoted on a not-to-exceed basis.

Item 4

Description: Design, execution, and installation of treatment of current railing along overpass between Silver Street and Rail Street. Final design and treatment shall be approved by owner. Bid shall be quoted on a not-to-exceed basis. items shall include all artist fees, metal work, materials, and installation.



Current Condition



Item 5

Kiosks and Sign Frames

The work will consist of design, manufacturing, and installation of kiosks and/or sign frames as specified below. Final design and artwork to be approved by owner. Delivery and installation included in bid. Price shall be quoted on a per sign basis. Final count for number shall be determined at a later date.

3-sided kiosk

Work shall include design and manufacture of triangular kiosk/sign frame.

Three rigid steel posts on each side of the sign, W4x13, HSS A847 Weathering Steel, 4x4x5/16, 9'-0" long. (Lower 3' encased in concrete). All concrete must be washed off the sign after pouring.

Three vertical ¼" steel sign backing plates 3'-1" wide x 2'-9" high welded toward the top of and between the posts to accommodate a minimum 24" x 36" graphic. Graphic and narrative to be supplied by others.

The top of the steel backing plates will have an artwork motif and 4" wide motif relief plate will be welded to the back side of and near the top of each plate. Finials will be provided by the

fabricator on top of each of the posts. Design and artwork to be approved by owner.

Backing plate shall have six 3/8" holes to be used for bolting on artwork panels supplied by owner. 1/4" Stainless steel security bolts will be supplied by fabricator for installation of the artwork panels.

2-Sided Kiosk/Sign Frame

Work shall include design and manufacture of double-sided kiosk/sign frame.

Two rigid steel posts on each side of the sign, W4x13, HSS A847 Weathering Steel, 4x4x5/16, 9'-0" long. (Lower 3' encased in concrete). All concrete must be washed off the sign after pouring.

Two vertical 1/4" steel sign backing plates 3'-1" wide x 2'-9" high welded toward the top of and between the posts to accommodate a minimum 24" x 36" graphic. Graphics and narrative to be supplied by others.

The top of the steel backing plates will have an artwork motif and 4" wide motif relief plate will be welded to the back side of and near the top of each plate. Finials will be provided by the fabricator on top of each of the posts. Design and artwork to be approved by owner.

Backing plate shall have six 3/8" holes to be used for bolting on artwork panels supplied by owner. 1/4" Stainless steel security bolts will be supplied by fabricator for installation of the artwork panels.

Single Side Kiosk/Sign Frame

Work shall include design and manufacture of single side sign frame.

Two rigid rectangular steel posts on each side of sign HSS A847 4x4x5/16. Height 48"

One steel backing plate 36" wide. Design and artwork to be approved by owner.

Backing plate shall have six 3/8" holes to be used for bolting on artwork panels supplied by owner. 1/4" Stainless steel security bolts will be supplied by fabricator for installation of the artwork panels.

Sign Frame accommodate cabinet for changeable message board/display. Size and design to be developed with owner. Frame shall match other kiosk/signs manufactured under this contract.

Item 6

Description: *Firefighter Memorial Sculpture*. Design, execution, and installation of 8' layered steel sculpture to be installed at newly constructed Firefighter Square Plaza. Sculptured weathering steel. Foundation work shall be performed by others based on artist's specifications. Final design to be approved by owner. Bid shall be quoted on a not-to-exceed basis. Item shall include all artist fees, metal work, materials, and installation.

Item7: Shipping (priced by shipping source)

Shipping by source

Delivered to:600 Cherry Street, Negaunee, Michigan 49866