

City of Negaunee
Downtown Social District
Commons Area Management and Maintenance Plan

Commons Area Management and Maintenance Plan

Overview

In an effort to support local restaurants, microbreweries, bars, and similar food service businesses; sustain and grow economic development; create placemaking amenities; and to supplement outdoor social distancing space when pandemics may occur, the City of Negaunee has established an outdoor Social District and Commons Area.

Other Options for Outdoor Dining and Alcoholic Beverage Consumption

The establishment of the Commons Area in accordance with the provisions of MCL 436.1555 in no way negates the ability of a businesses to establish sidewalk cafes for outdoor dining and alcoholic beverage consumption in accordance with the pre-existing MLCC guidelines and city ordinances.

The establishment of the Commons Area in no way negates the ability of an organization or individual(s) to apply for and be granted an alcohol use permit on city properties where such activities are permitted.

Signage and Barriers

The city will prepare generic signs as required by the MLCC Rules. Signs shall be affixed in appropriate locations to manage alcohol use within the Social District. Boundaries of the Commons Area will be identified by signs matching the current streetscape signage.

Signs will include the following as described: (1) General Welcome\Rules\Map Boundary sign that includes the rules and designates the boundaries of the Social District and Commons Area, (2) Public Park signs which indicates a park is within the Commons Area, (3) Public Parking Lot sign that indicates that a closed parking-lot is part of the Commons Area, (4) Public Street sign, indicating that a closed street is part of the Commons Area, (5) Boundary Zone sign, indicating the exit boundaries of the Commons Area and providing a violation warning.

Sign

General Welcome\Rules\Map Boundary Signs- To be placed in conspicuous locations nearest the peripheral edges of the Commons Area, specifically at access points using non-motorized transportation (Exhibit A).

Public Park Signs- To be placed at the entrances of all public parks that are included in the Commons Area for alcohol consumption (Exhibit B).

Public Parking Lot Sign- A sign to be placed at the entrances of all public parking lots, closed to public parking, and included in the Commons Area for alcohol consumption (Exhibit C).

Public Street Sign- A temporary sign to be placed at the entrances of a public street, closed to vehicular use, and included in the Commons Area for alcohol consumption (Exhibit D).

Boundary Exit Sign – To be placed at the exit points of the Commons District including a violation warning. (Exhibit E)

Qualified Licensed Participating Business- To be placed at of all participating licensed businesses within the social district (Exhibit F).

General Requirements

The Commons Area is subject to the following requirements:

1. Boundaries, structures, and materials associated with Commons Areas shall:
 - a. Not impede drivers, pedestrians, or wheelchair users. Note: The City will consider the extended closure of sections of public parking lots and streets, subject to maintaining adequate access to the surrounding properties.
 - b. Not block sight visibility of remaining parking lot aisles or intersections.
 - c. Not impede emergency vehicle and personnel access.
 - d. Not prevent access to nearby businesses or homes.
2. Alcohol service shall conform to all Michigan Liquor Control Commission requirements, including any Social District and Commons Areas Permit requirements. Specifically:
 - a. The serving container must prominently display the licensee's trade name or logo or other designation that is unique to the business that sold the alcohol.
 - b. The serving container must prominently display a logo or other designation that is unique to the commons area to be provided by the Negaunee DDA.
 - c. The serving container is not made of glass.
 - d. The serving container does not have a liquid capacity over 16 ounces.
3. Hours of operation shall begin no earlier than 12:00 noon, food and beverage service shall discontinue in the Commons Areas no later than 12:00 midnight, Monday through Sunday
4. The layout of boundaries, structures, and materials shall conform to the proposed outdoor Commons Area layout plan during open hours. Tables, chairs, and temporary barriers may be permitted to remain outdoors during closed hours but must be secured. Service items, decorations, cleaning materials and equipment and other easily stored items must be removed from the area at the end of each business day. Solid barriers, if incorporated, may remain for the duration of the permitted timeframe.
5. Sites and surfaces shall be cleaned before service hours and upon close.
6. Tents and other temporary shelter structures may be approved by permit.

7. Amplified music shall be set at reasonable levels so as not to disturb owners and occupants of neighboring properties and will require a permit if not a DDA sponsored vendor or event.

8. All heating elements must be approved by permit.

Negaunee Social District and Commons Area

The Downtown Negaunee Social District shall include all yellow outlined areas on the attached map (Exhibit G). The Commons area will consist of all areas colored magenta where alcohol can be consumed and the following conditions are present: (1) Anywhere public sidewalks are present, (2) public parks that are signed as part of the Commons Area, (3) publicly-owned parking lots and when closed to public parking and are signed as part of the Commons Area, (4) any on-street parklet dining locations on Iron Street, (5) and any public street closed to traffic and signed as part of the Commons Area.

Enforcement and General Management

City of Negaunee Police Department will manage enforcement of the boundary area according to their processes and procedures.

The Negaunee DDA will manage Social District business training and public education according to their processes and procedures.

The City of Negaunee and the Negaunee DDA will manage additional restrooms, picnic tables, seating, food trucks, and ancillary services according to their processes and procedures.

The Negaunee DPW will manage all street closures, signage, and grounds cleanup according to their processes and procedures.

Beverage Containers

All qualified, licensed, and participating businesses within the Social District must adhere to the following standards:

1. Unique beverage containers for use within the Commons Area must be supplied by the licensed permittee of a color and design specified and approved by the City Manager or his/her designee.

2. All unused beverage containers must be always kept under the control of the establishment.

3. All beverage containers must prominently display the approved Negaunee DDA Social District/Commons Area Logo (as provided by the City of Negaunee DDA).

4. Beverage containers supplied by a participating licensed permittee must prominently display the permittee's trade name or logo or another mark unique to the permittee.

5. Beverage containers must have a liquid capacity of 16 ounces or less.

6. Beverage containers must not be glass.

7. Businesses may place a surcharge on cups.

8. Alcohol served in the unique beverage container may only be consumed in the Commons Area.

Mandated Training

Businesses desiring to participate in the Negaunee Social District will need to provide a certificate indicating they have passed the Michigan TIPS Alcohol Server training. Additional City and/or DDA training will be provided for the following:

1. Information on the Social District and Commons Area.
2. Information on Beverage Containers.
3. Answers to questions regarding anything associated with the Social District.

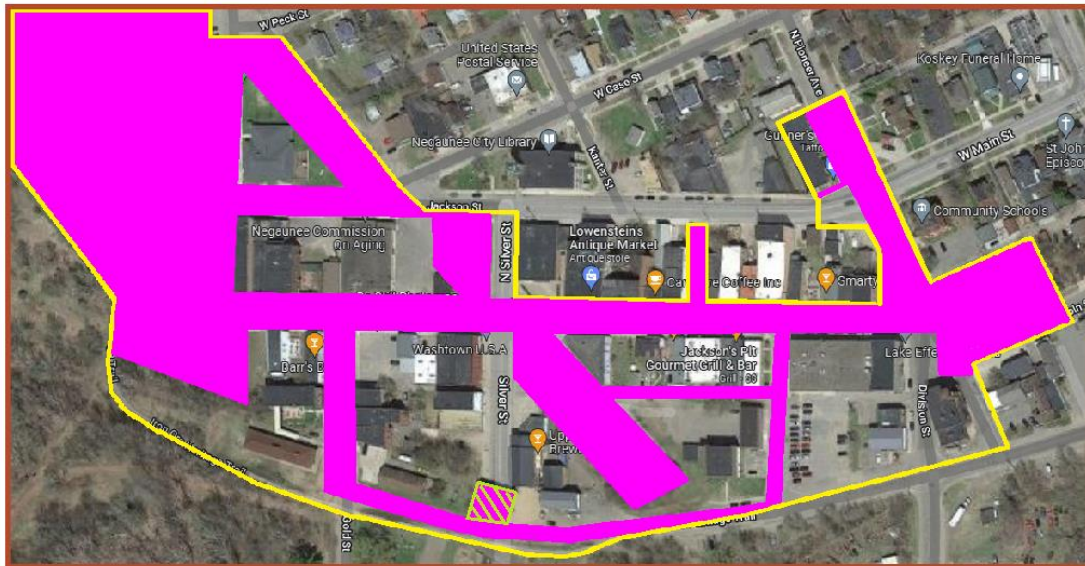
Exhibits

Exhibit A: General Welcome/Rules/Map Boundary Sign

WELCOME TO THE DOWNTOWN NEGAUNEE SOCIAL DISTRICT

RULES

1. ALCOHOL MAY ONLY BE CONSUMED IN COMMONS AREAS. THIS INCLUDES DESIGNATED PUBLIC SIDEWALKS, SIGNED PUBLIC PARKS, SIGNED PUBLIC PARKING AREAS, SIGNED PUBLIC STREETS
2. ALL ALCOHOL MUST BE PURCHASED FROM A PARTICIPATING LICENSED BUSINESS
3. NO OUTSIDE ALCOHOL PERMITTED IN THE COMMONS AREA
4. SOCIAL DISTRICT HOURS NOON TO 12 AM, MONDAY -SUNDAY



COMMONS AREA



PARK SPACE OFF OF
RAIL STREET. NOT
BELOW VIADUCT.



Exhibit B: Public Park Sign

NOTICE!



**THIS PUBLIC PARK IS WITHIN
THE NEGAUNEE SOCIAL
DISTRICT COMMONS AREA.**

**CONSUMPTION OF ALCOHOLIC
BEVERAGES IS PERMITTED.**

Exhibit C: Public Parking Lot Sign

NOTICE!



**THIS PUBLIC PARKING LOT IS WITHIN
THE DOWNTOWN NEGAUNEE SOCIAL
DISTRICT.**

**CONSUMPTION OF ALCOHOLIC
BEVERAGES IS PERMITTED WHEN
SIGNED AND LOT IS CLOSED BY ORDER
OF THE CITY OF NEGAUNEE**

NOTICE!



**THIS CLOSED STREET IS
WITHIN THE NEGAUNEE
SOCIAL DISTRICT COMMONS
AREA.**

**CONSUMPTION OF ALCOHOLIC
BEVERAGES IS PERMITTED.**

Exhibit E: Boundary Zone Sign

NOTICE!



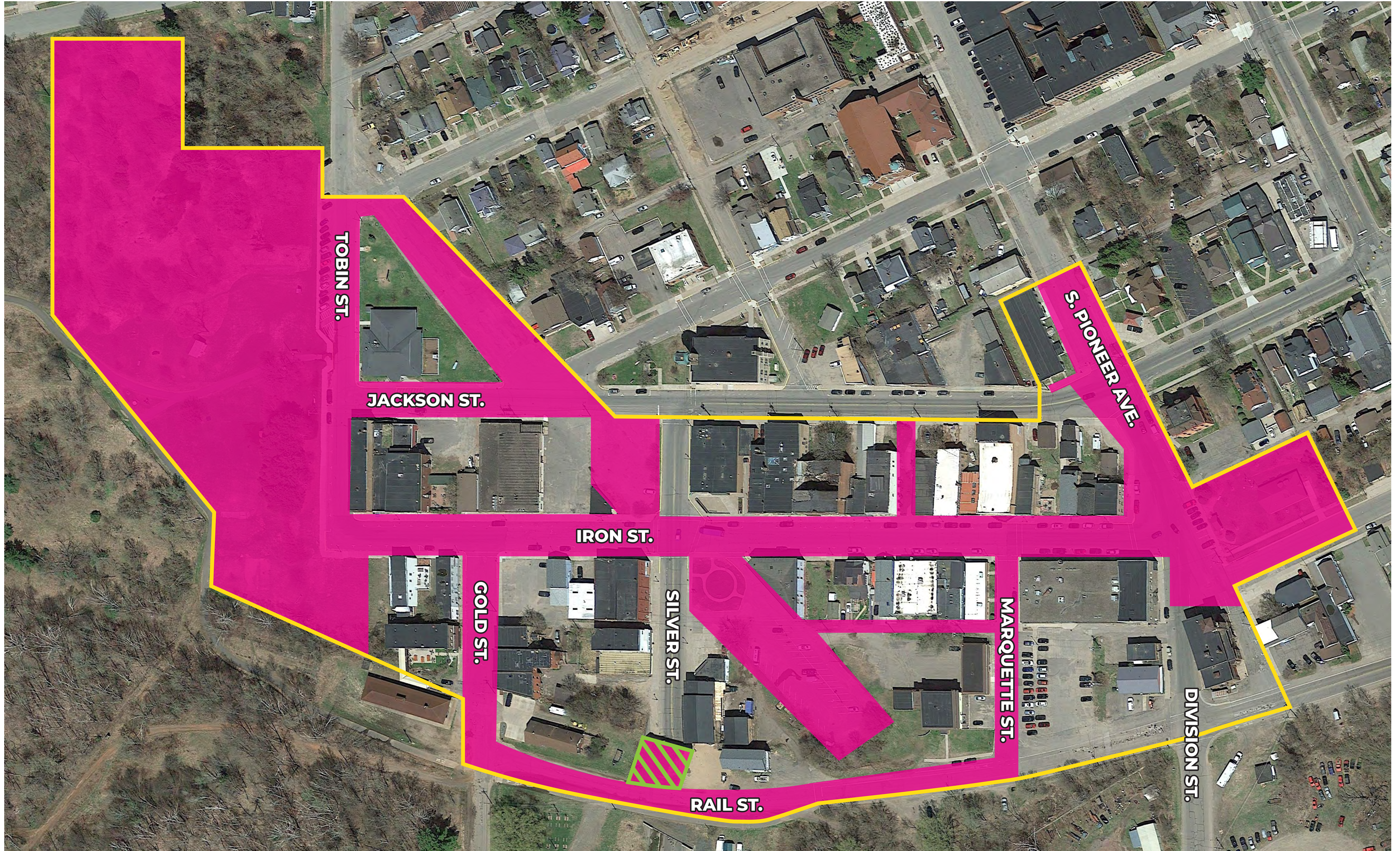
**YOU ARE NOW LEAVING THE
NEGAUNEE SOCIAL DISTRICT
COMMONS AREA.**

**NO OPEN ALCOHOL BEVERAGES
BEYOND THIS POINT!**

**FAILURE TO COMPLY MAY RESULT IN A CIVIL
INFRACTION AND/OR CITATION UP TO \$500
PER OFFENSE.**

Exhibit F: Qualified Participating Business Sign

**PARTICIPATING
SOCIAL DISTRICT
BUSINESS**



COMMONS AREA



**PARK SPACE OFF OF
RAIL STREET. NOT
BELOW VIADUCT.**

