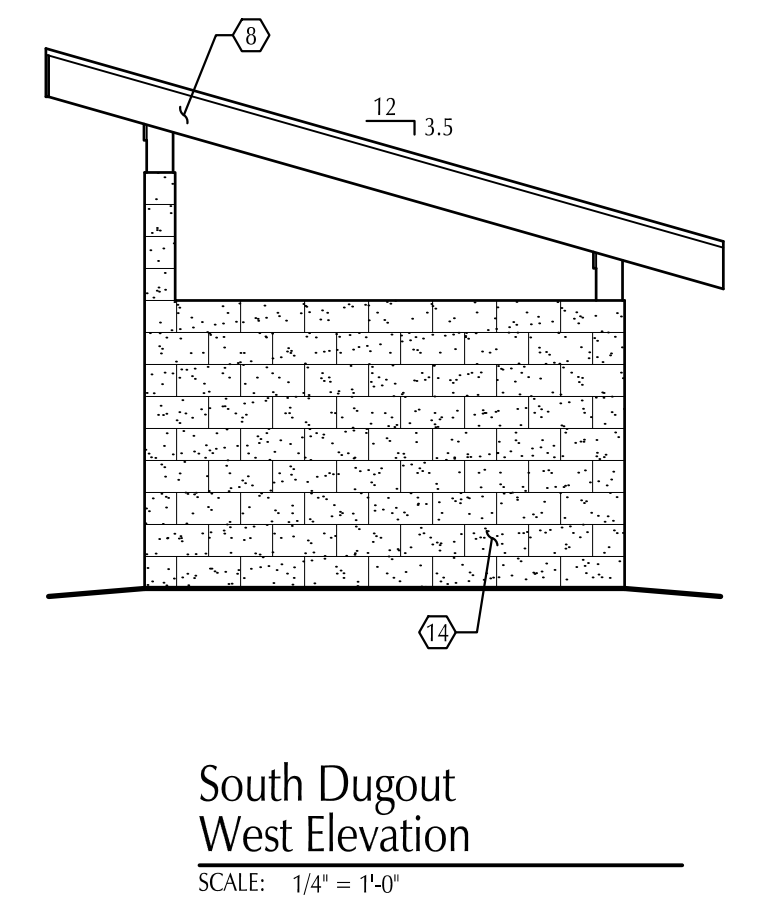
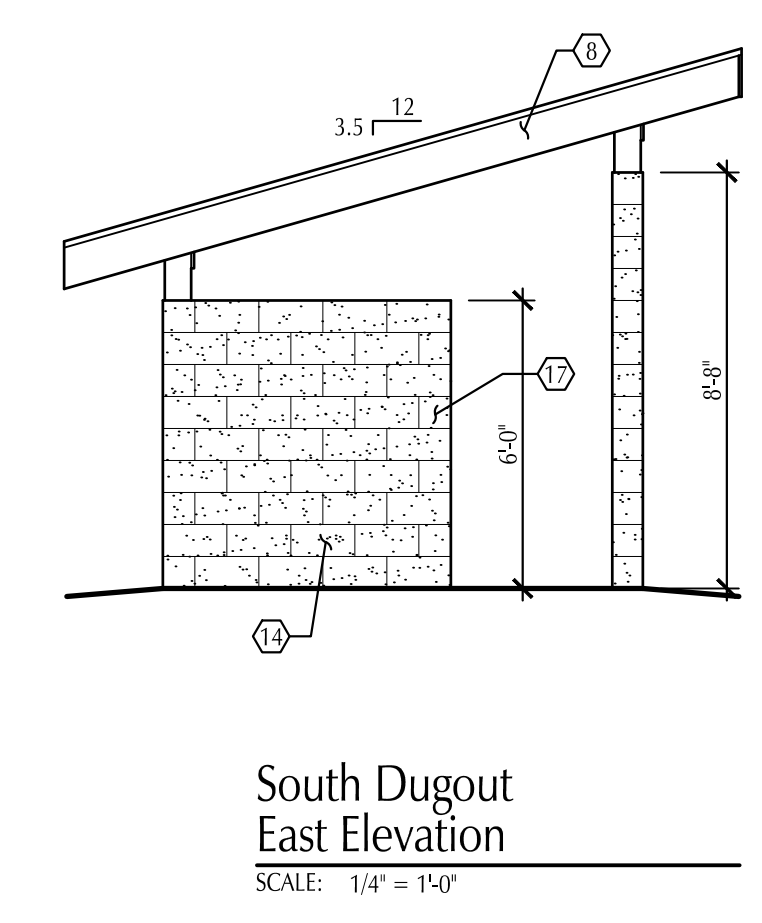
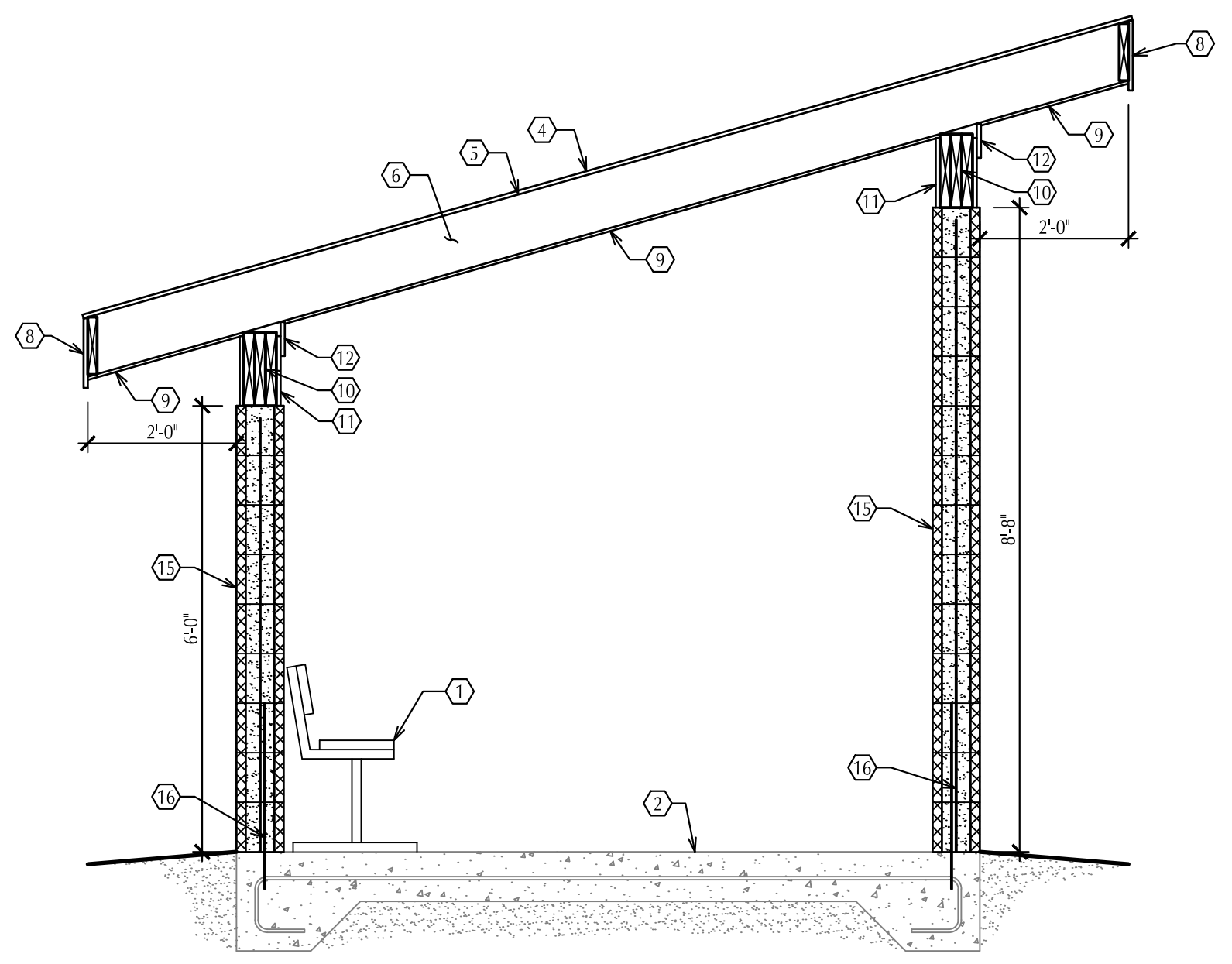
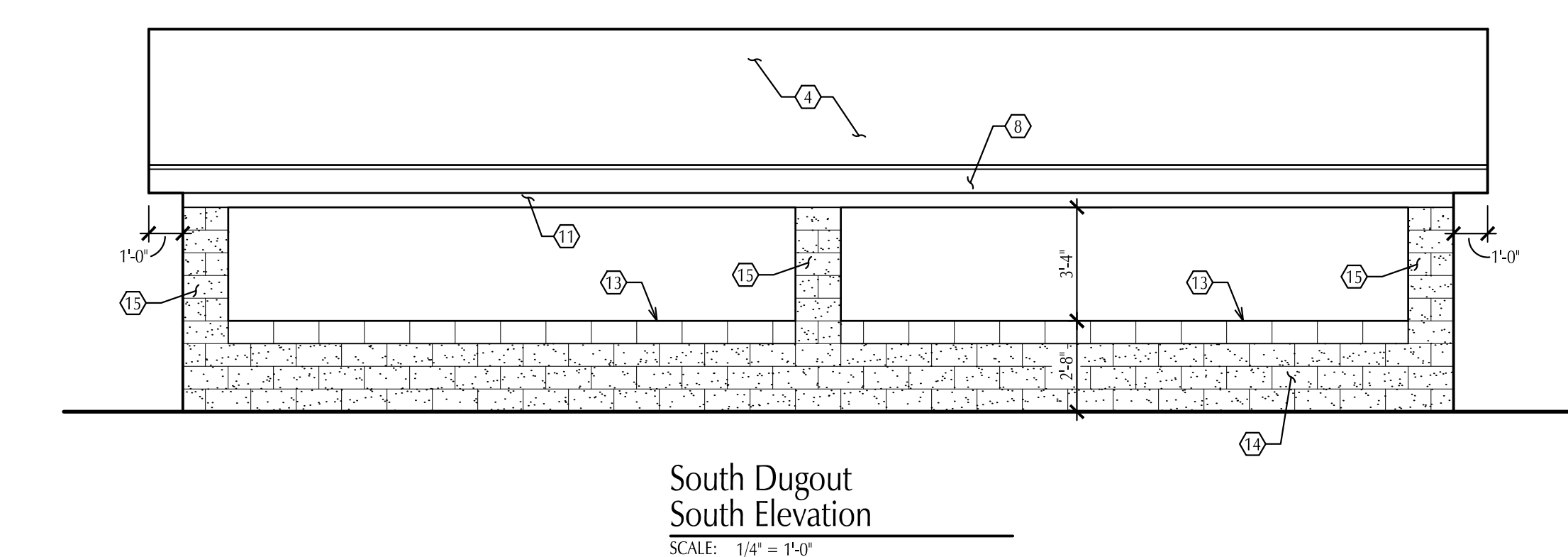
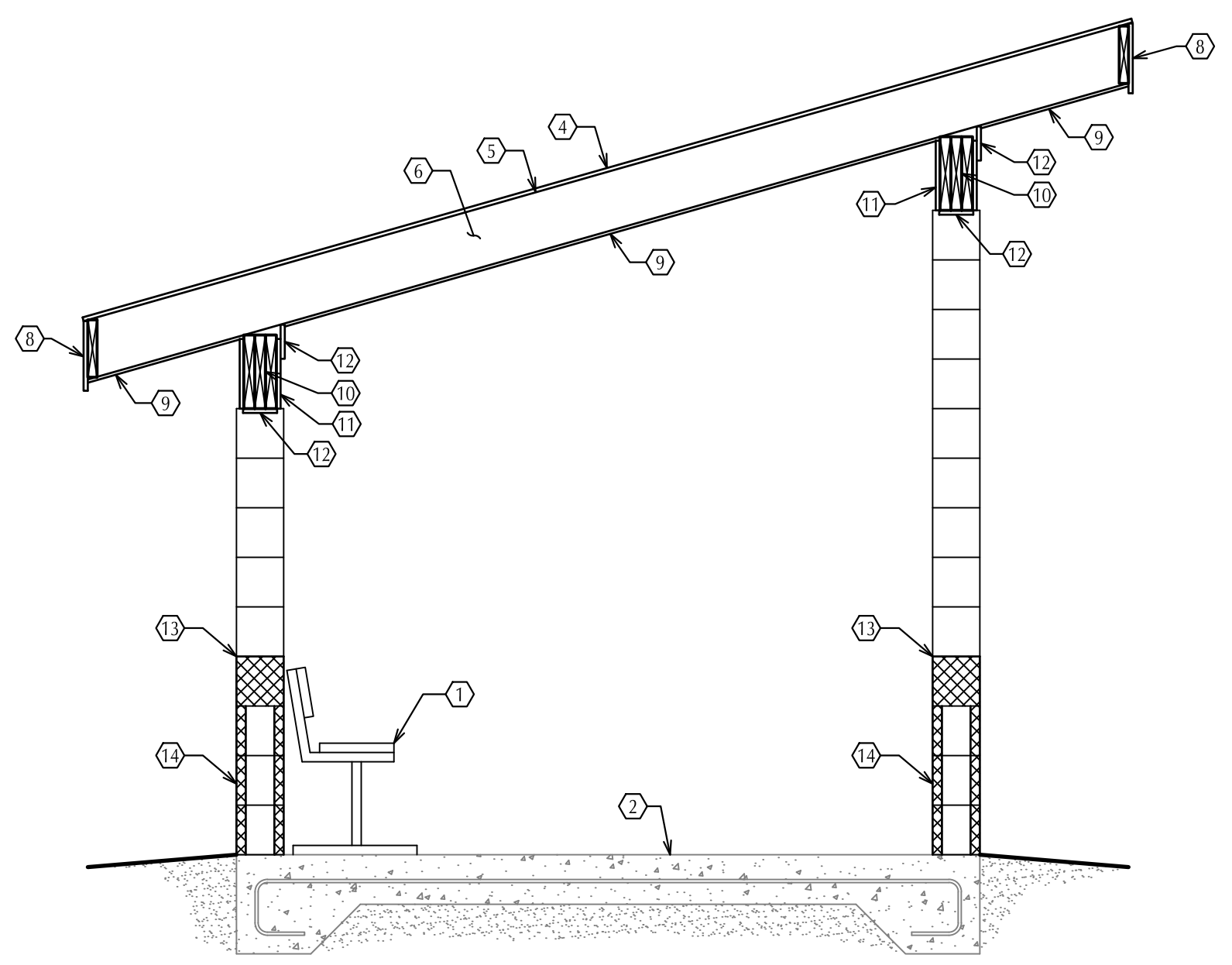
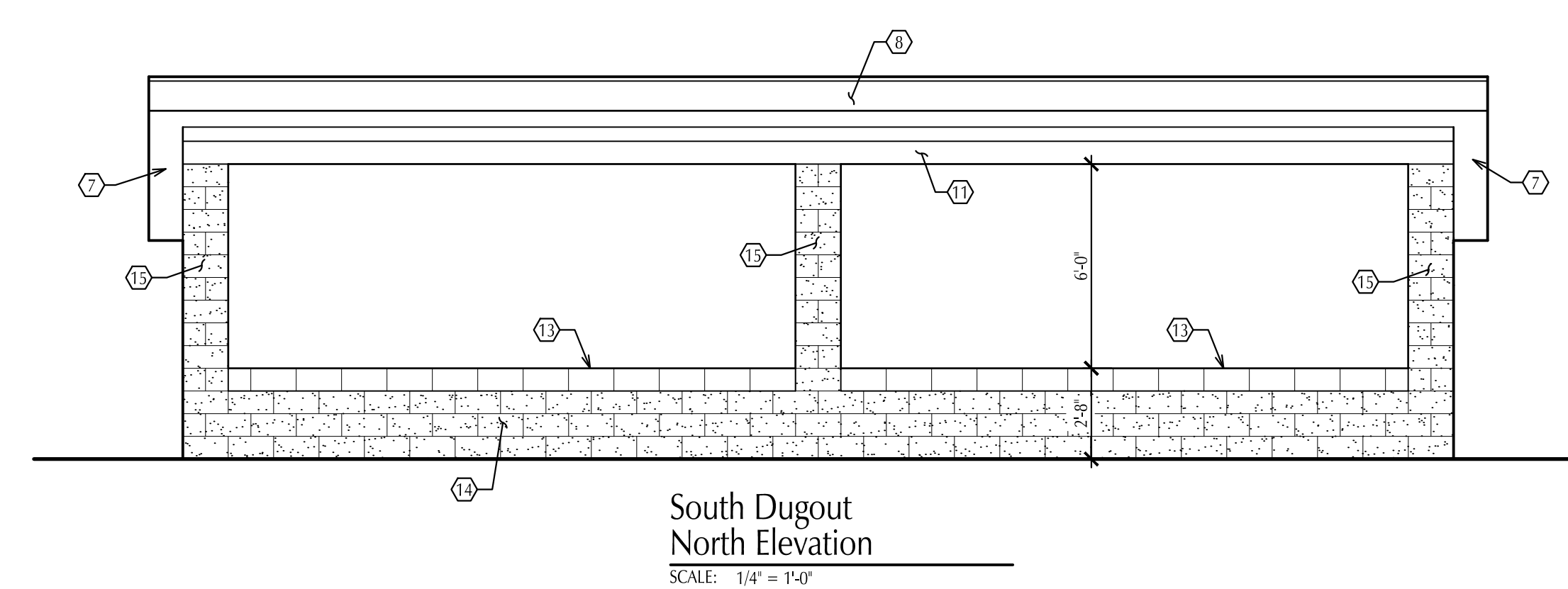
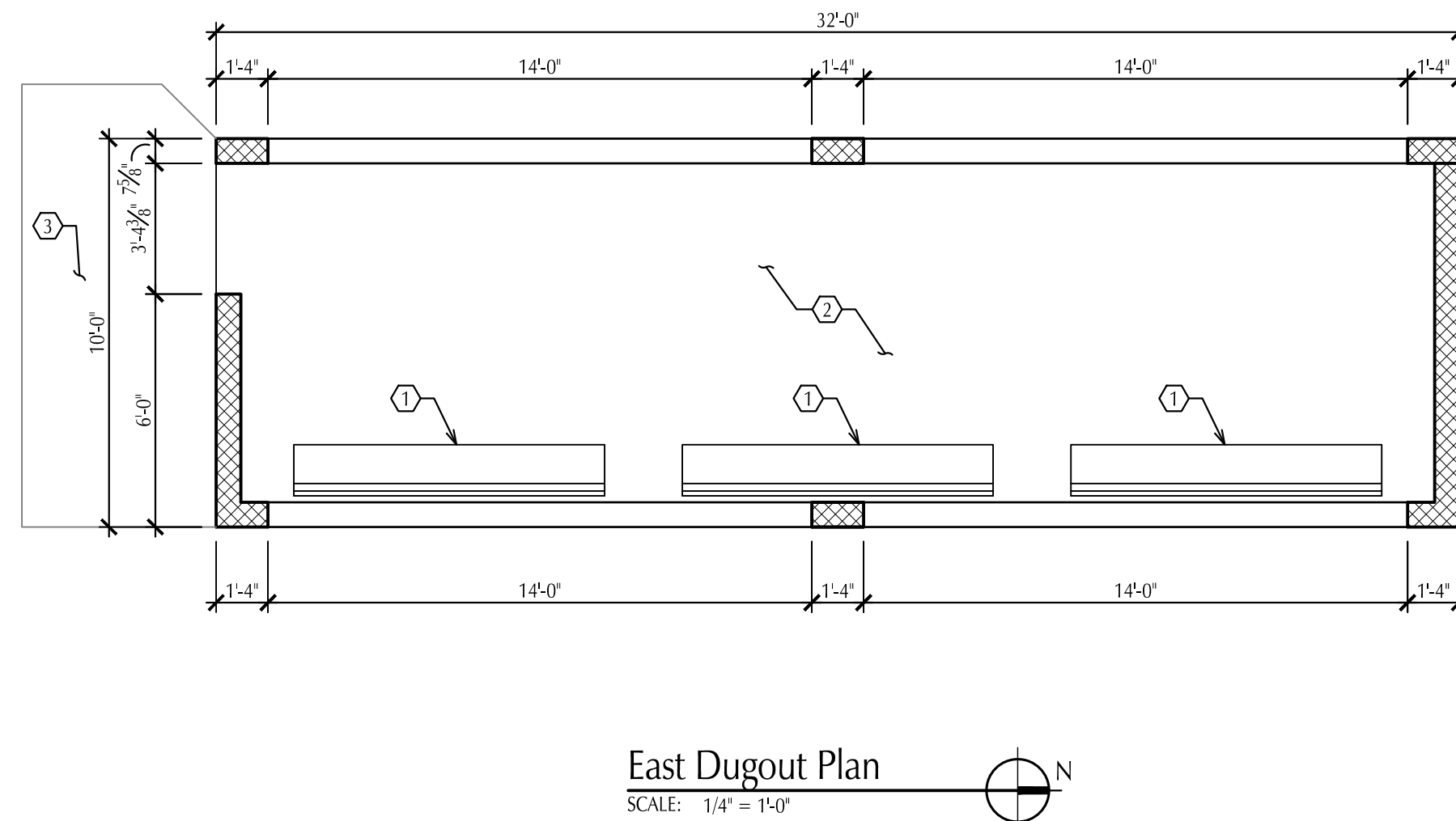
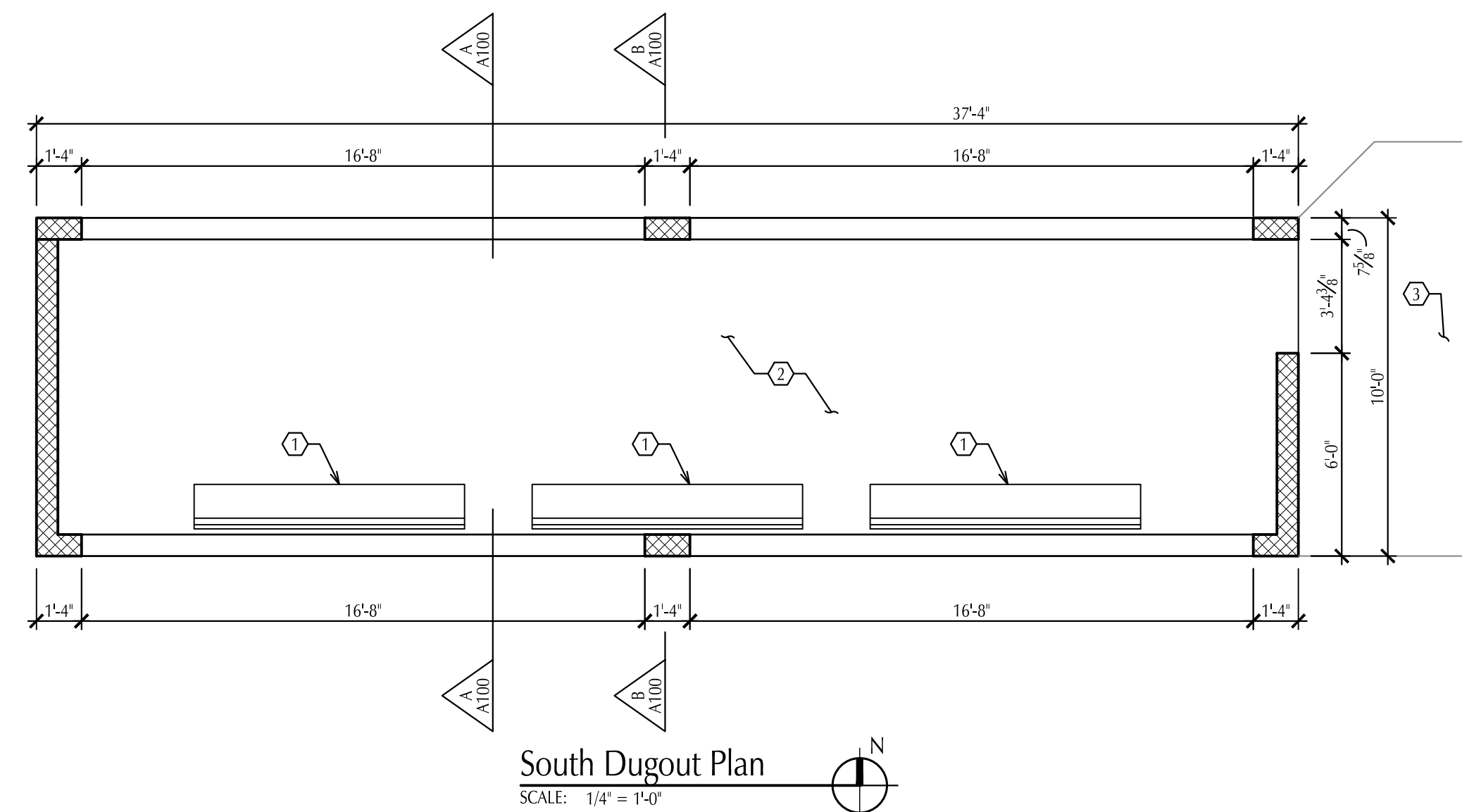


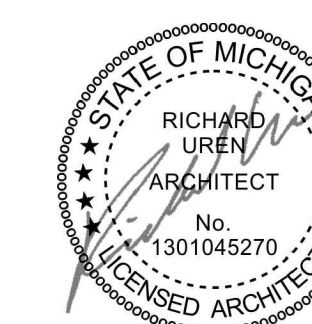
Keynotes

1. Player benches by owner, not in contract.
2. Existing thickened edge concrete slab.
3. Existing concrete sidewalk.
4. Architectural shingles over synthetic underlayment. Provide pre-finished aluminum drip edge.
5. 5/8" OSB sheathing.
6. 2x10 rafter at 24" O.C. Attach to beams with Simpson VPA2 connectors.
7. Frame 12" end overhang with 2x10 sub-fascia and 2x6 outriggers at 24" o.c.
8. LP Smartside trim 0.675 x 11.21 over 2x10 sub-fascia.
9. Pre-finished aluminum soffit panels.
10. (3) 1 3/4" x 11 7/8" LVL beam. Attach to top of CMU piers with Simpson ABA66Z post bases.
11. LP Smartside trim 0.675 x 11.21 both sides of beam.
12. LP Smartside trim 0.675 x 3.5.
13. Solid 8" CMU at opening sill.
14. 8" split face CMU with horizontal ladder reinforcing at 16" o.c.
15. 8" split face CMU at piers. Solid grout cores with #5 bar vertical in each core.
16. Provide #5 dowel at each grouted core. Epoxy dowel 6" into existing concrete and extend 24" minimum above existing concrete.
17. Provide #5 bar in grouted core and dowel per keynote 16 at end of wall.



Code Information

1. Building Use Group: U - Utility and Miscellaneous.
2. Type of Construction: 3B.
3. Design Loads:
 - 3.1. Ground snow load (Pg) = 70 PSF
 - 3.2. Roof snow load (P) = 0.7(1.0)(1.2)(1.0)/70 = 59 PSF
 - 3.3. Dead load per materials shown.



City of Negaunee
LaCombe Field
Dugouts

Plans, Elevations, Sections

ISSUED FOR: Client Review 12-20-2023
Construction 1-8-2024
Bids 2-6-2024

**NORTHERN
DESIGN
WORKS**

A100
PROJECT NO. 2346

420 RAIL STREET - NEGAUNEE, MI 49866 906-475-6616
COPYRIGHT 2023 - NORTHERN DESIGN WORKS