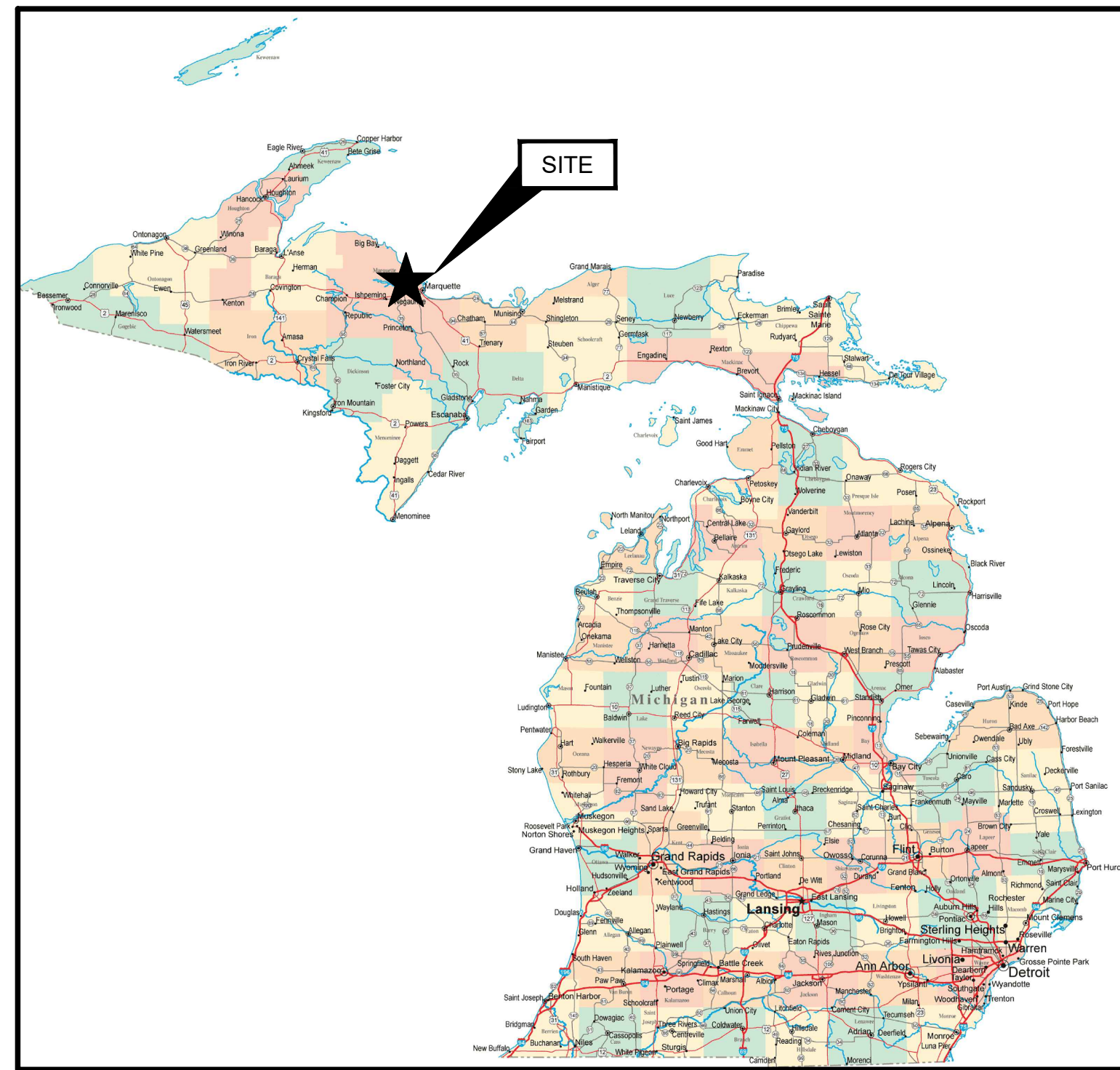


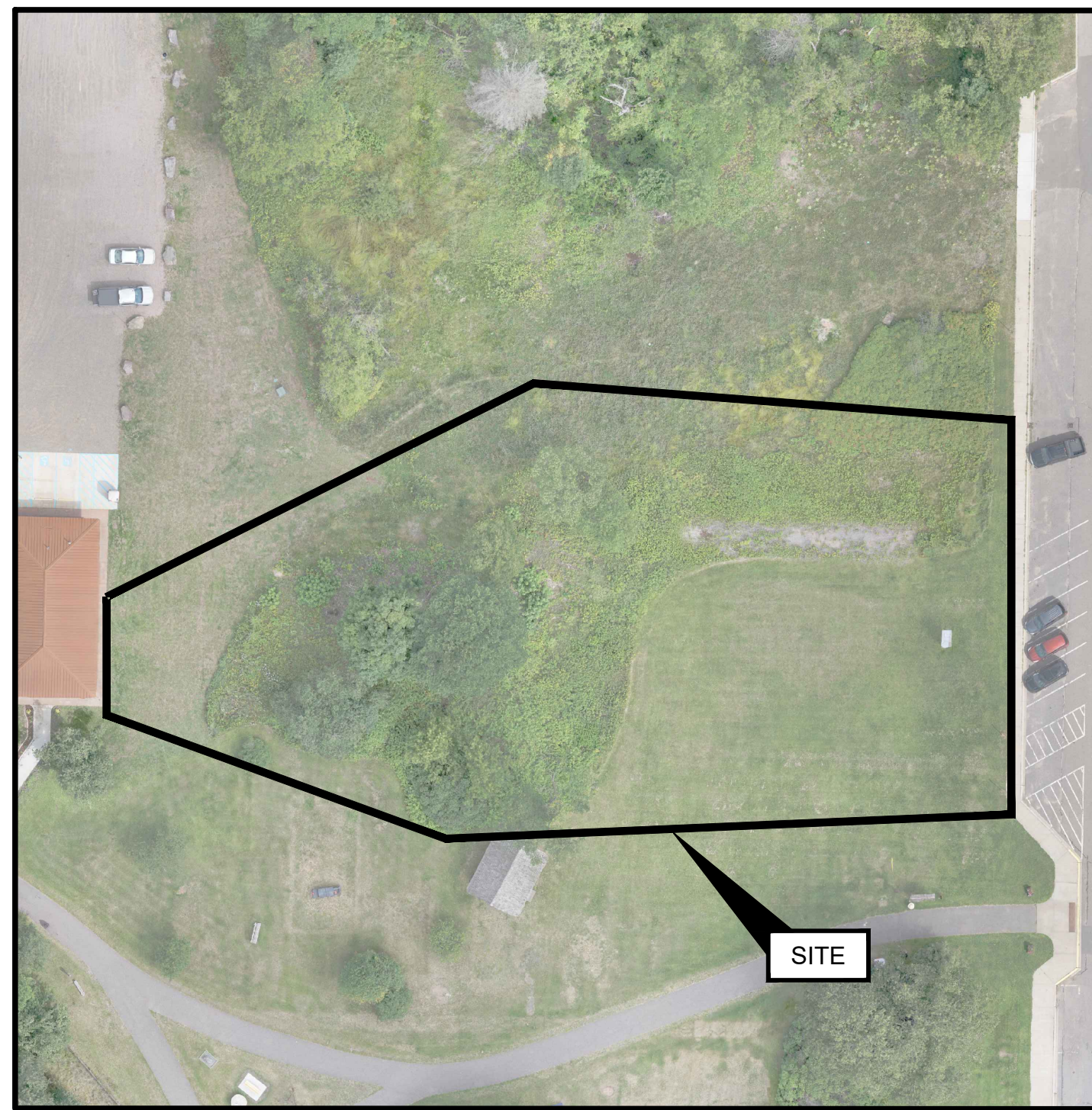
# JACKSON MINE PARK IMPROVEMENT

NEGAUNEE, MI



SOURCE:  
GEI CONSULTANTS

STATE MAP  
(NOT TO SCALE)



SOURCE:  
GEI CONSULTANTS

SITE LOCATION MAP  
(NOT TO SCALE)

SHEET INDEX		
SHEET NO.	DRAWING NO.	TITLE
1	G-01	COVER SHEET
2	G-02	GENERAL NOTES
3	C-01	PROPOSED CONDITIONS
4	D-01	DETAILS

PREPARED FOR:

CITY OF NEGAUNEE  
319 W. CASE STREET  
P.O BOX 70  
NEGAUNEE, MI 49866

PREPARED BY:

GEI CONSULTANTS OF MICHIGAN, P.C.  
109 W. BARAGA AVENUE  
MARQUETTE, MI 49855  
(906)451-4021



THIS DOCUMENT, AND THE IDEAS AND DESIGNS INCORPORATED HEREIN, IS AN INSTRUMENT OF PROFESSIONAL SERVICE, IS THE PROPERTY OF GEI CONSULTANTS AND IS NOT TO BE USED, IN WHOLE OR IN PART, FOR ANY OTHER PROJECT WITHOUT THE WRITTEN AUTHORIZATION OF GEI CONSULTANTS.

GEI PROJECT NO. 2102848

					For Bid
					DWG. NO. <b>G-01</b>
1	7/31/2023	ADDENDUM NO. 2 FOR BID	GMM		SHEET NO. <b>1 OF 4</b>
0	3/24/2022	FOR BID	GMM		
NO.	DATE	ISSUE/REVISION	APP		



**PLAYGROUND EQUIPMENT:**

- LANDSCAPE STRUCTURES INC. CUSTOM INCLUSIVE NATURAL PLAY PLAYBOOSTER PLAYGROUND PER DESIGN #1133975-04-01, OR APPROVED EQUAL.
- LANDSCAPE STRUCTURES INC. FRIENDSHIP, TIRE, BELT AND TODDLER SWINGS, OR APPROVED EQUAL.
- LANDSCAPE STRUCTURES INC. REVIROCK BOUNCER AND REVIWHEEL SPINNER, OR APPROVED EQUAL.
- LANDSCAPE STRUCTURES INC. CUSTOM MINE CAR SPRING ROCKER, OR APPROVED EQUAL.
- LANDSCAPE STRUCTURES INC. CURVA AND SADDLE SPINNERS, OR APPROVED EQUAL.
- LANDSCAPE STRUCTURES INC. CUSTOM NATURAL PLAY PLAYSHAPER PER DESIGN #1133975-04-01, OR APPROVED EQUAL.
- LANDSCAPE STRUCTURES INC. GRFC LOG CRAWL TUNNEL, OR APPROVED EQUAL.
- LANDSCAPE STRUCTURES INC. GRFC LOG BENCHES, OR APPROVED EQUAL.
- DUMOR 290-00 S-2 (BIKE RACK), OR APPROVED EQUAL.
- MURDOCK GYM 75-PF(DRINKING FOUNTAIN), OR APPROVED EQUAL.
- ANOVA SITE FURNISHINGS F1021D (TRASH CAN), OR APPROVED EQUAL.
- ANOVA SITE FURNISHINGS F1038(PICNIC TABLE), OR APPROVED EQUAL.
- ANOVA SITE FURNISHINGS F1029(BENCH), OR APPROVED EQUAL.

PICNIC TABLE AND BENCHES TO BE MANUFACTURED FROM RECYCLED MATERIAL.

EQUIPMENT SHALL BE PER DRAWINGS OR PRIOR APPROVED EQUAL. CONTRACTOR TO PURCHASE AND DELIVER TO SITE, CITY TO INSTALL.

CONTRACTOR TO PREPARE SUBGRADE FOR 1 FOOT DEPTH OF ENGINEERED WOOD FIBER SAFETY SURFACING.

CONTRACTOR TO FURNISH 210 CYDS OF ENGINEERED WOOD FIBER SAFETY SURFACING MEETING ALL CRITERIA SET BY ASTM 1292. CITY TO INSTALL.

ANY MANUFACTURER SEEKING PRIOR APPROVAL MUST SUBMIT A DETAILED WRITTEN LIST OF DEVIATIONS, AND A 2-DIMENSIONAL DRAWING OF THEIR PROPOSED STRUCTURE WHICH INCLUDES THE IPEMA CERTIFICATION AND MANUFACTURER'S STATEMENT THAT PROPOSED EQUIPMENT CONFORMS TO THE ADA ACCESSIBILITY GUIDELINES WITH A BREAKDOWN OF TOTAL ELEVATED COMPONENTS, ELEVATED COMPONENTS ACCESSIBLE BY TRANSFER, AND TOTAL ACCESSIBLE GROUND LEVEL COMPONENTS. MANUFACTURER MUST ALSO SUBMIT ISO CERTIFICATIONS AS STATED ABOVE

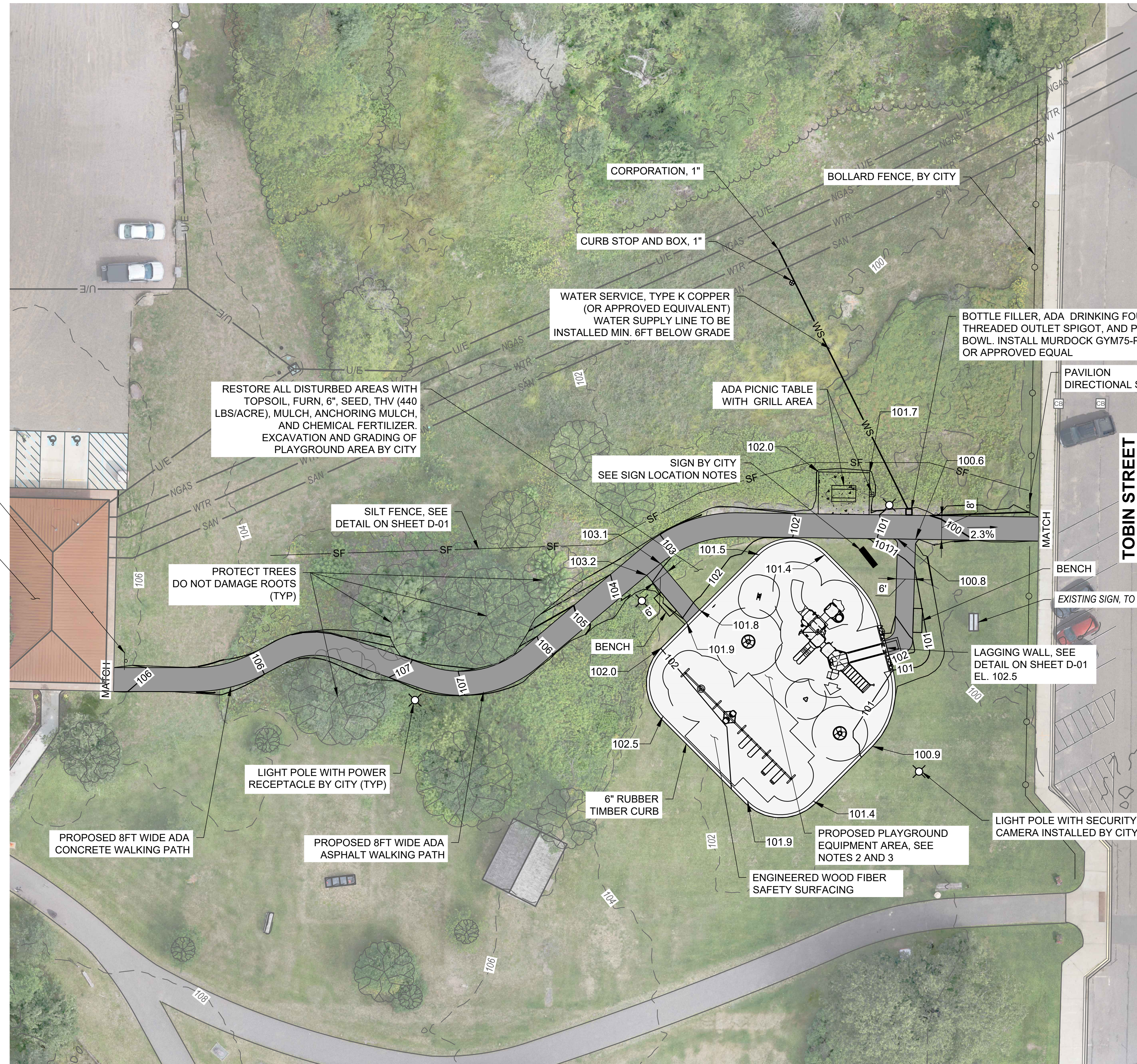
PLAYGROUND DIRECTIONAL SIGN  
JACKSON MINE PARK PAVILION FLOOR SLAB EL. 1368.5

**SIGN LOCATION NOTES:**

1. PROVIDE NATIVE LANDSCAPING INCLUDING MINIMUM:
  - SERVICEBERRY 5 GAL (1)
  - RED OSIER DOGWOOD 3 GAL (2)
  - LITTLE BLUESTEM 1 GAL (6)
  - PURPLE CONEFLOWER 1 GAL (12)
  - FALSE SUNFLOWER 1 GAL (12)
2. PROVIDE PLANTING PLAN TO OWNER FOR APPROVAL PRIOR TO INSTALLATION
3. PROVIDE 6" STONE MULCH OVER GEOTEXTILE FABRIC. PROVIDE MULCH SAMPLE FOR APPROVAL BY OWNER

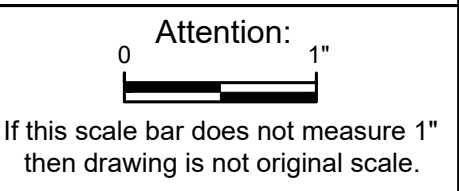
**NOTES:**

1. ELEVATION CONTOURS ARE DERIVED FROM AERIAL SURVEY WITH EXPECTED ACCURACY OF +/- 1 FOOT. ELEVATIONS GIVEN ARE NOT ABSOLUTE AND ARE RELATIVE TO LOCAL DATUM
2. FOR ITEMIZED LIST OF PLAYGROUND EQUIPMENT SHOWN IN PLAN, REFER TO PROJECT SPECIFICATIONS.
3. FOR PLAYGROUND SURFACING MATERIAL, REFER TO PROJECT SPECIFICATIONS.
4. ALL WATER SERVICE WORK TO BE COMPLETED BY CITY OF NEGAUNEE.



P.E. No.: 54921

Approved:	GMM
Checked:	GMM
Drawn:	ANC
Designed:	ANC
GEI Project	2102848



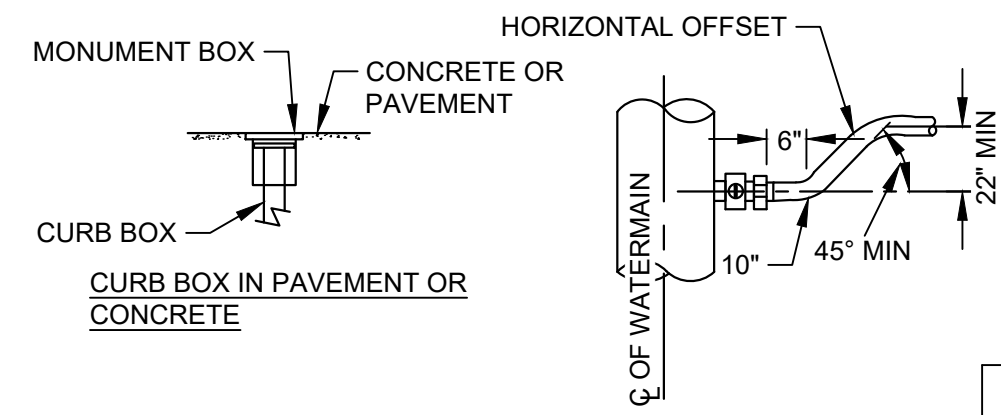
NO.	DATE	ISSUE/REVISION	APP
1	7/31/2023	ADDENDUM NO 2	GMM
0	1/12/2022	FOR BID	GMM

SHEET NAME  
**PROPOSED CONDITIONS**

SHEET NO.  
**3**

**For Bid**

C:\BMD\1\_TON\W\Negaunee\_City\_of\2102848\_Jackson Park & Teal Lake Improvements\00\_CADD\Design\Sheets\Proposed Conditions\_Jackson Mine Park.dwg - 5/22/2023

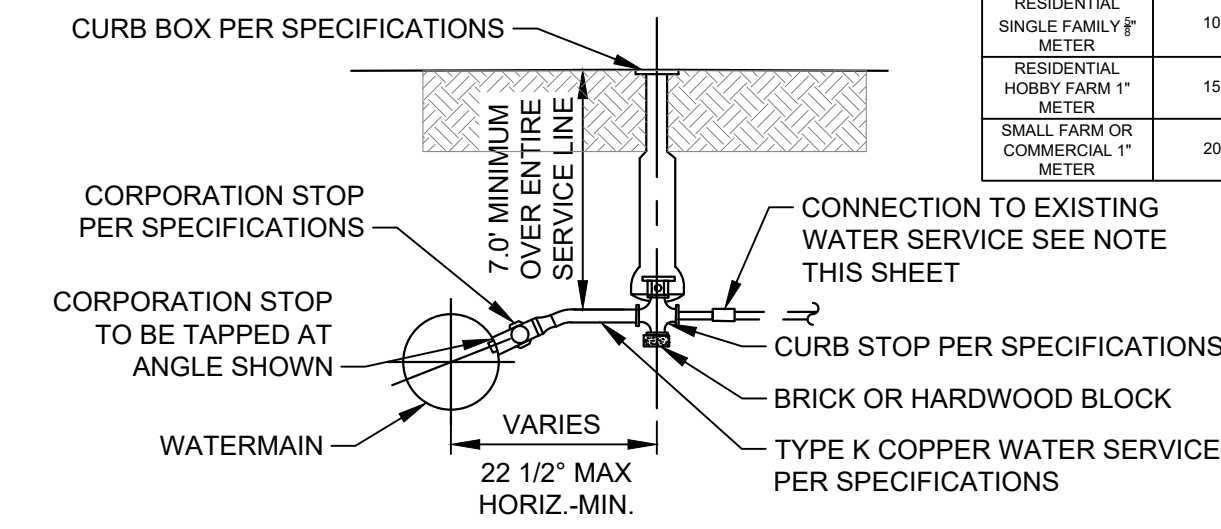


CONNECTION TO EXISTING WATER SERVICE SHALL BE AS FOLLOWS:

1. COPPER TO COPPER SHALL HAVE CONDUCTIVE COMPRESSION COUPLING.
2. COPPER TO STEEL PIPE SHALL HAVE CONDUCTIVE COMPRESSION COUPLING TO THREADED COUPLING.

CUSTOMER DESCRIPTION/ METER SIZE	APPROXIMATE MAXIMUM DEMAND (GPM)	SUGGESTED MAXIMUM ALLOWABLE SERVICE LENGTHS FOR WATER SERVICE SIZE SHOWN BASED ON METER SIZE SHOWN AND A MAXIMUM PRESSURE DROM OF 8 PSI			
		1" SERVICE	1 1/2" SERVICE	2" SERVICE	2 1/2" SERVICE
RESIDENTIAL SINGLE FAMILY 1/2" METER	10 (GPM)	90'	280'	680'	2700'
RESIDENTIAL HOBBY FARM 1" METER	15 (GPM)	70'	200'	500'	2000'
SMALL FARM OR COMMERCIAL 1" METER	20 (GPM)	35'	100'	250'	1000'

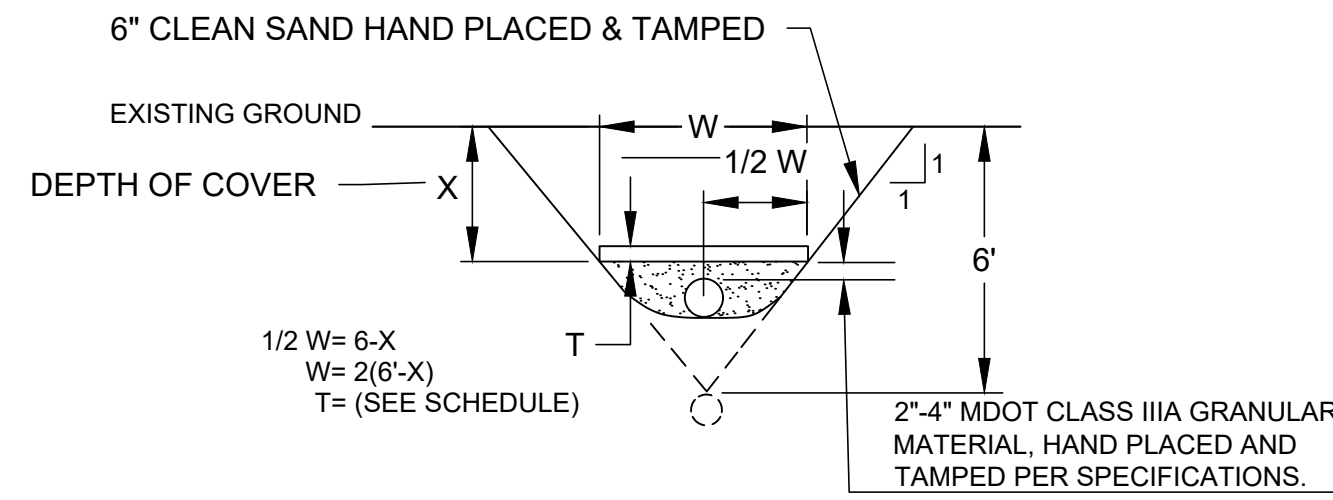
NOTE: REVIEW METER AND SERVICE LINE SIZE AND LENGTHS FOR OTHER CONDITIONS SUCH AS SPRINKLER REQUIREMENTS AND HIGH USE, CONSTANT PRESSURE CONDITION.



- NOTES:
1. SERVICE LINES SHALL BE CONTINUOUS WITHOUT JOINTS FROM THE CORPORATION STOP TO THE CURB STOP UNLESS APPROVED BY THE ENGINEER OR OWNER.
  2. BEDDING FOR WATER SERVICE LATERAL PIPE SHALL BE THE SAME AS FOR WATERMAIN PIPING AND IN ACCORDANCE WITH THE SPECIFICATIONS AND DRAWINGS.
  3. SERVICE LINES INSTALLED BENEATH THE ROADWAY SURFACE SHALL BE INSTALLED INSIDE OWNER SUPPLIED CASING PIPE IN ACCORDANCE WITH THE SPECIFICATIONS.

**WATER SERVICE CONNECTION**

SCALE: NTS



SHALLOW WATERMAIN

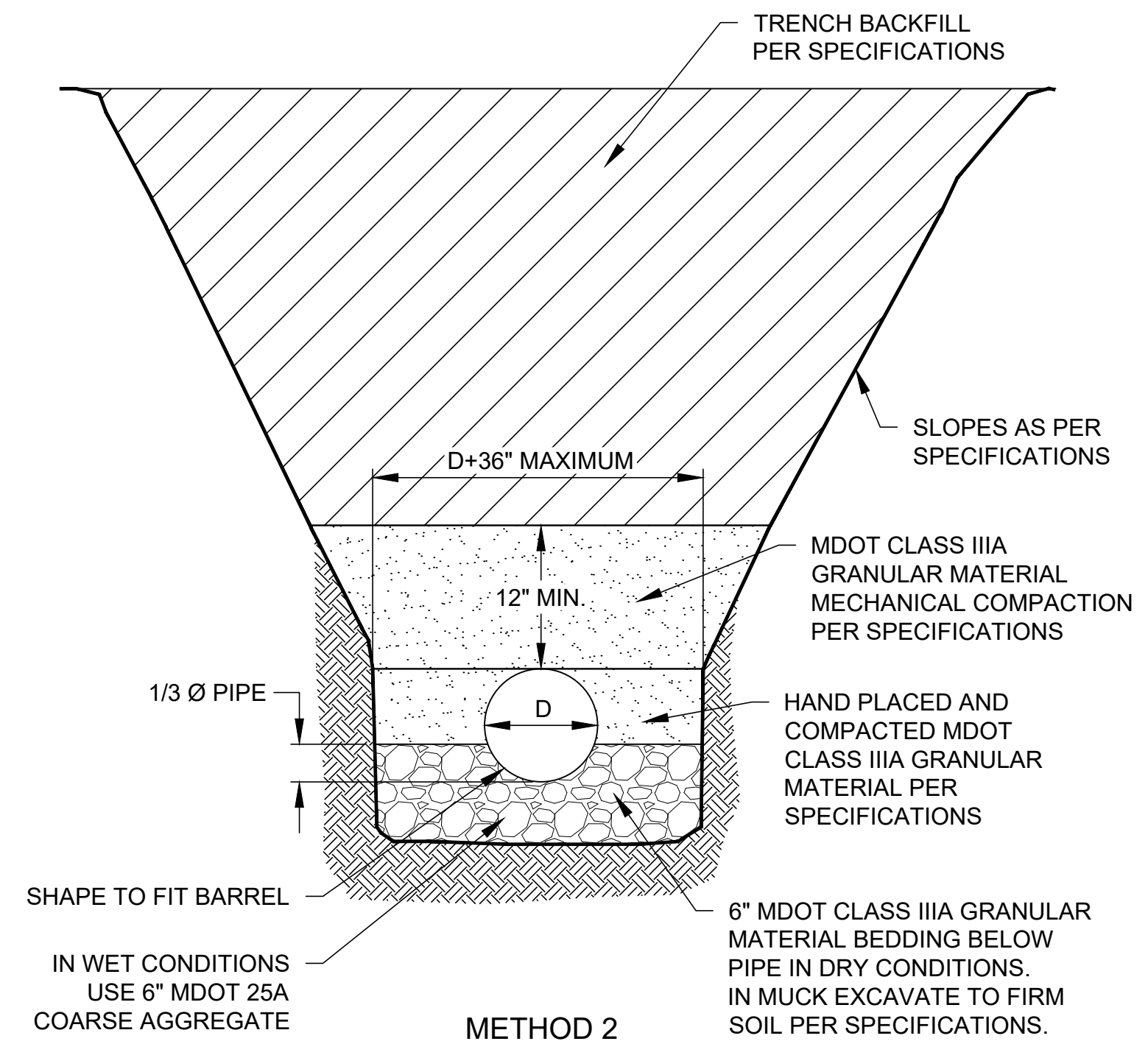
DEPTH OF COVER	INSULATION THICKNESS
3 1/2'	6"
4'	5"
4 1/2'	4"
5'	3"
5 1/2'	2"
6'	0"

NOTES:

1. INSULATION SHALL BE HIGH DENSITY CLOSED CELL RIGID POLYSTYRENE WITH A RATING OF R5 PER INCH OR GREATER.

**INSULATION DETAILS**

NO SCALE



METHOD 2

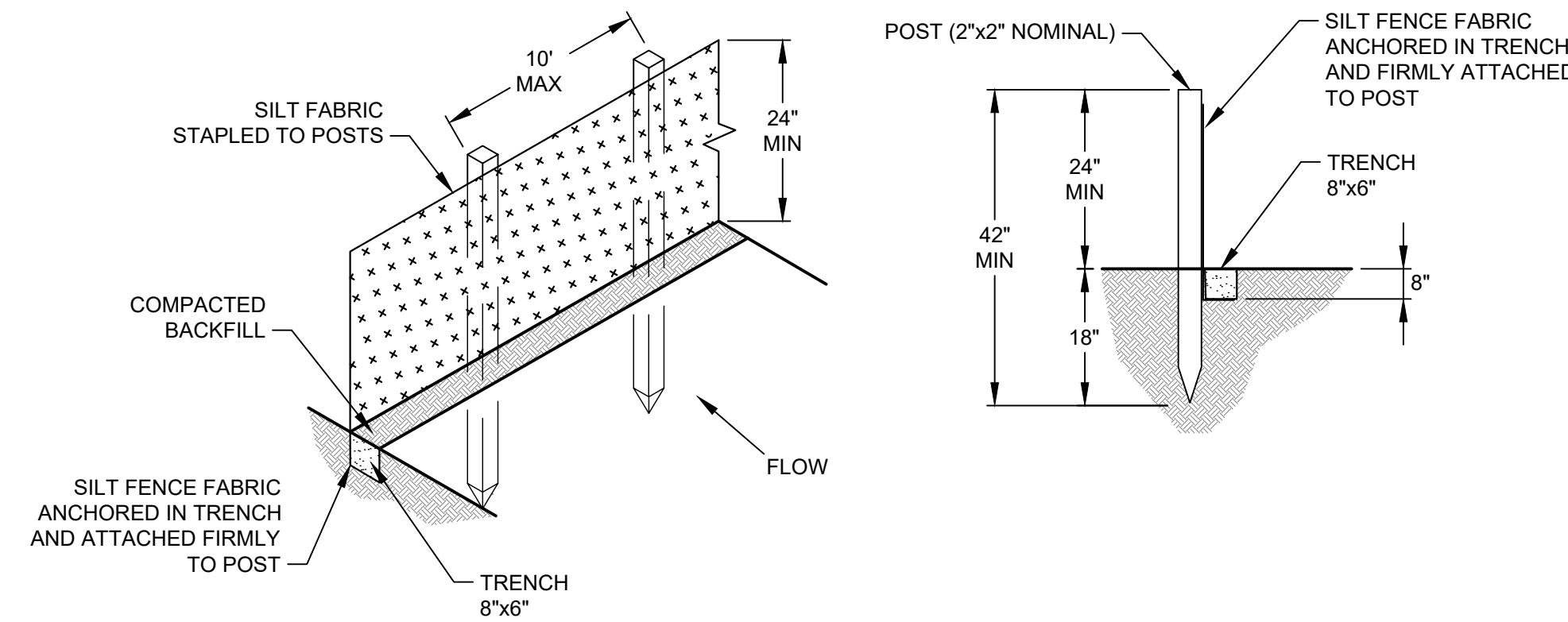
WHERE NATURAL MATERIAL BENEATH PIPE DOES NOT MEET MDOT CLASS IIIA SPECIFICATIONS OR WHERE NATURAL MATERIAL IS UNDERCUT DURING EXCAVATION TO STABILIZE TRENCH BOTTOM

**PIPE BEDDING DETAIL**

NO SCALE

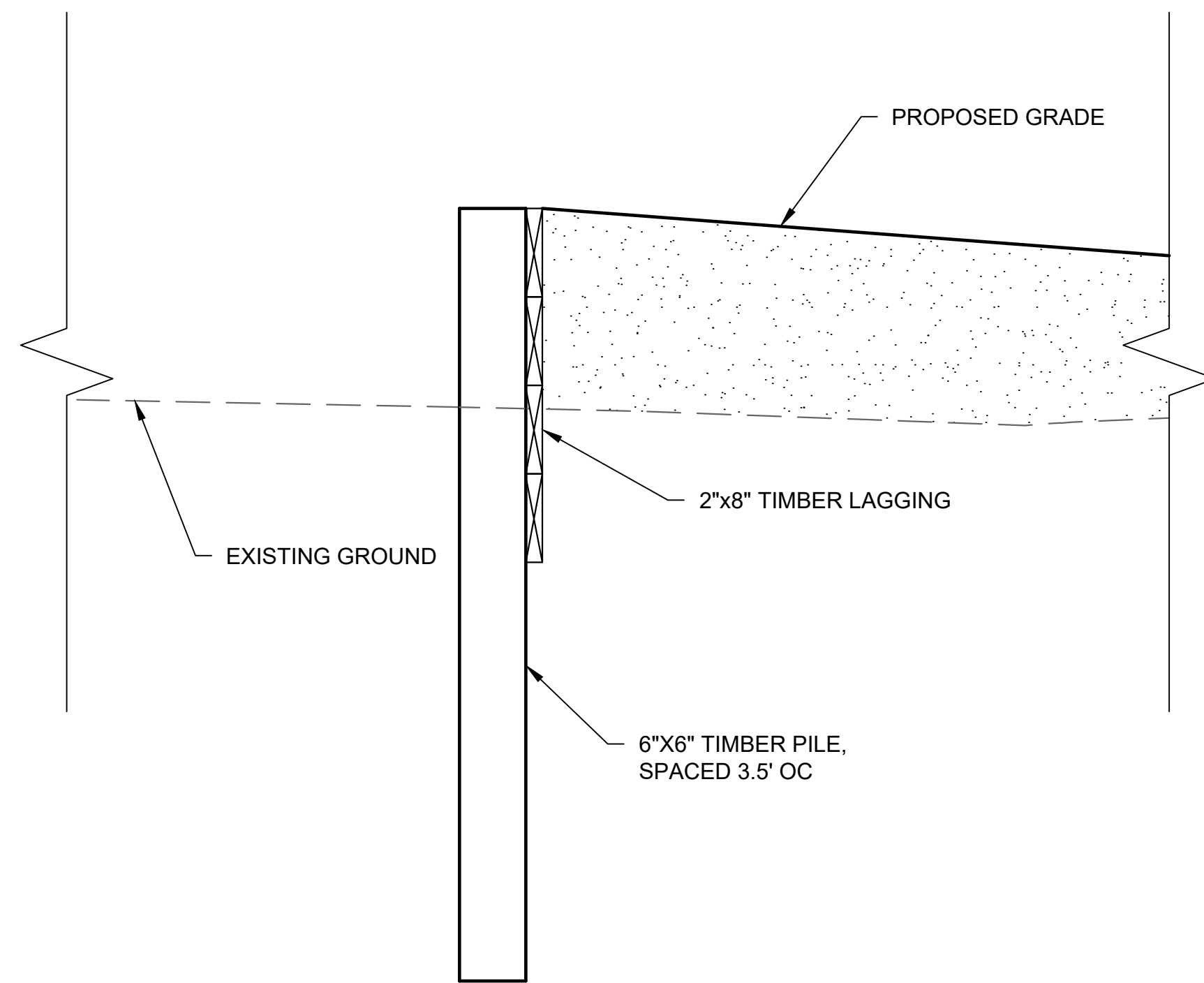
NOTES:

1. THE BACKFILL MATERIALS AND METHODS SHALL CONFORM TO THE SPECIFICATIONS.
2. CONTRACTOR SHALL INSTALL NON-WOVEN 8 OZ/SYD GEOTEXTILE FABRIC ABOVE MDOT 25A STONE FOR ENTIRE TRENCH WIDTH AND LENGTH OF STONE BEDDING WHEREVER UTILIZED. GEOTEXTILE FABRIC JOINTS SHALL OVERLAP A MINIMUM OF 2.0 FEET.



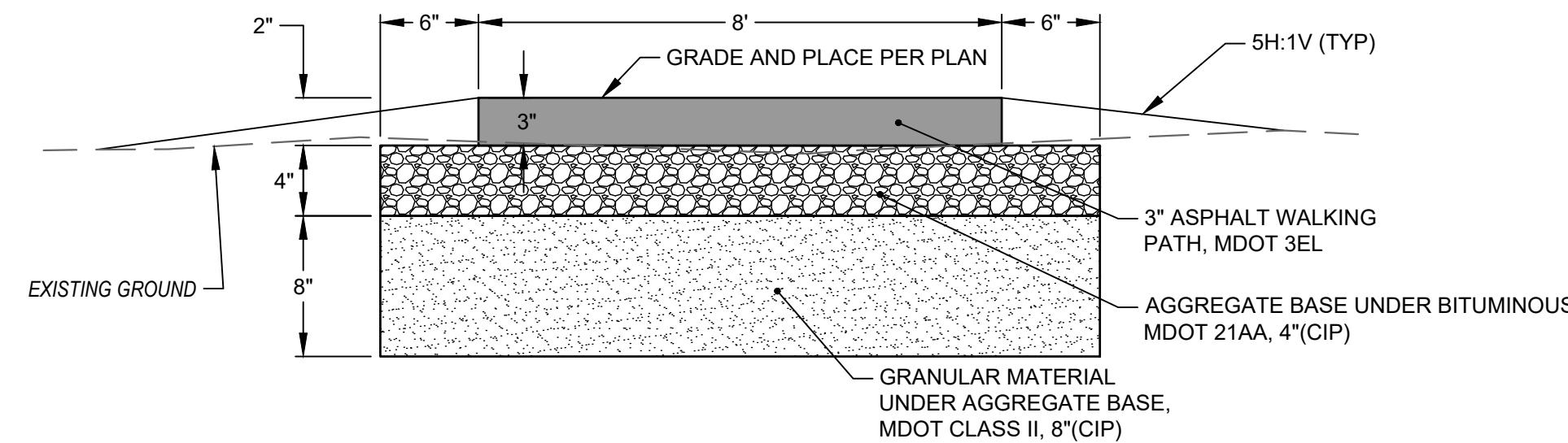
**SILT FENCE 3**

SCALE: NTS



**LAGGING WALL**

SCALE: NTS



NOTES:

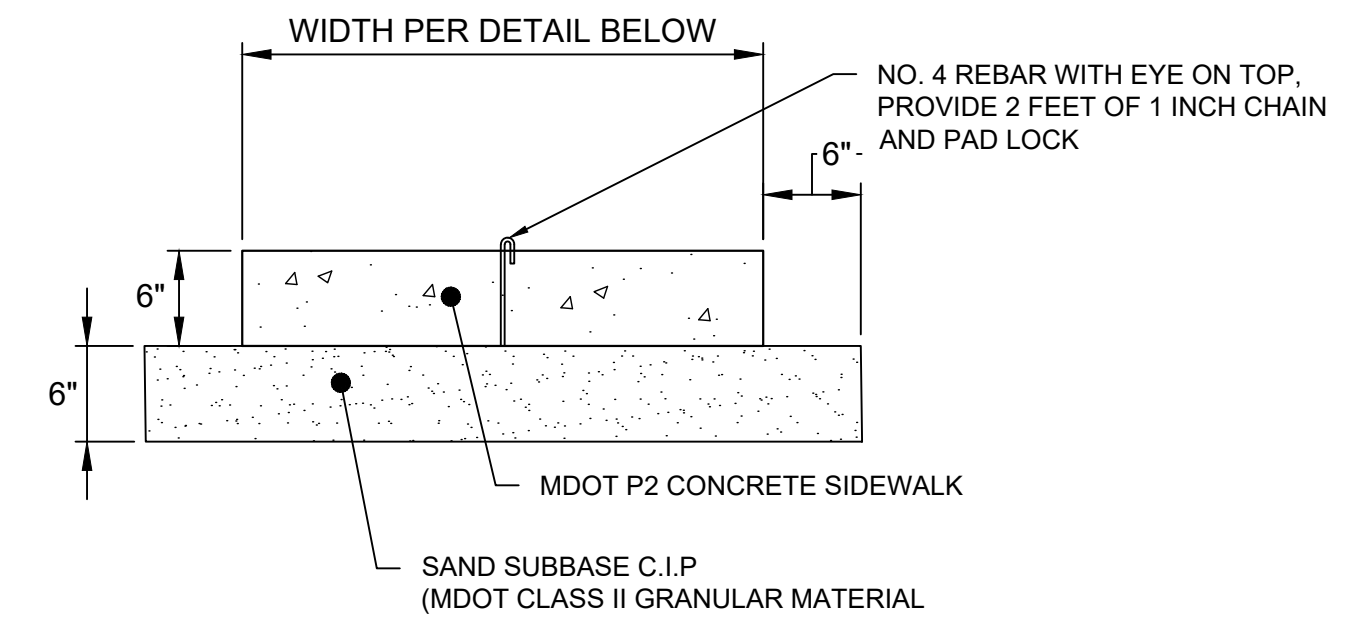
1. EXISTING MATERIAL MAY BE SUBSTITUTED FOR SUBBASE PROVIDED IT MEETS SPECIFICATIONS FOR MDOT CLASS II GRANULAR MATERIAL.
2. CONTRACTOR MUST SUBMIT ASPHALT MIX DESIGN TO ENGINEER FOR APPROVAL

ITEM	MIX	RATE OF APPLICATION	ESTIMATED THICKNESS	PERFORMANCE GRADE	DESCRIPTION
1	HMA, 3EL	330 LB/SYD	3.0 INCHES	58-34	3.0

PLACE HMA BOND COAT SS-1H; 0.05-0.15 GALLON/SYD AS DIRECTED BY THE ENGINEER BETWEEN HMA AND AGGREGATE BASE (FOR INFORMATION ONLY, INCLUDED WITH PAYMENT FOR HMA MIXTURES) MINIMUM AWI (TOP COURSE ONLY) SHALL BE 220

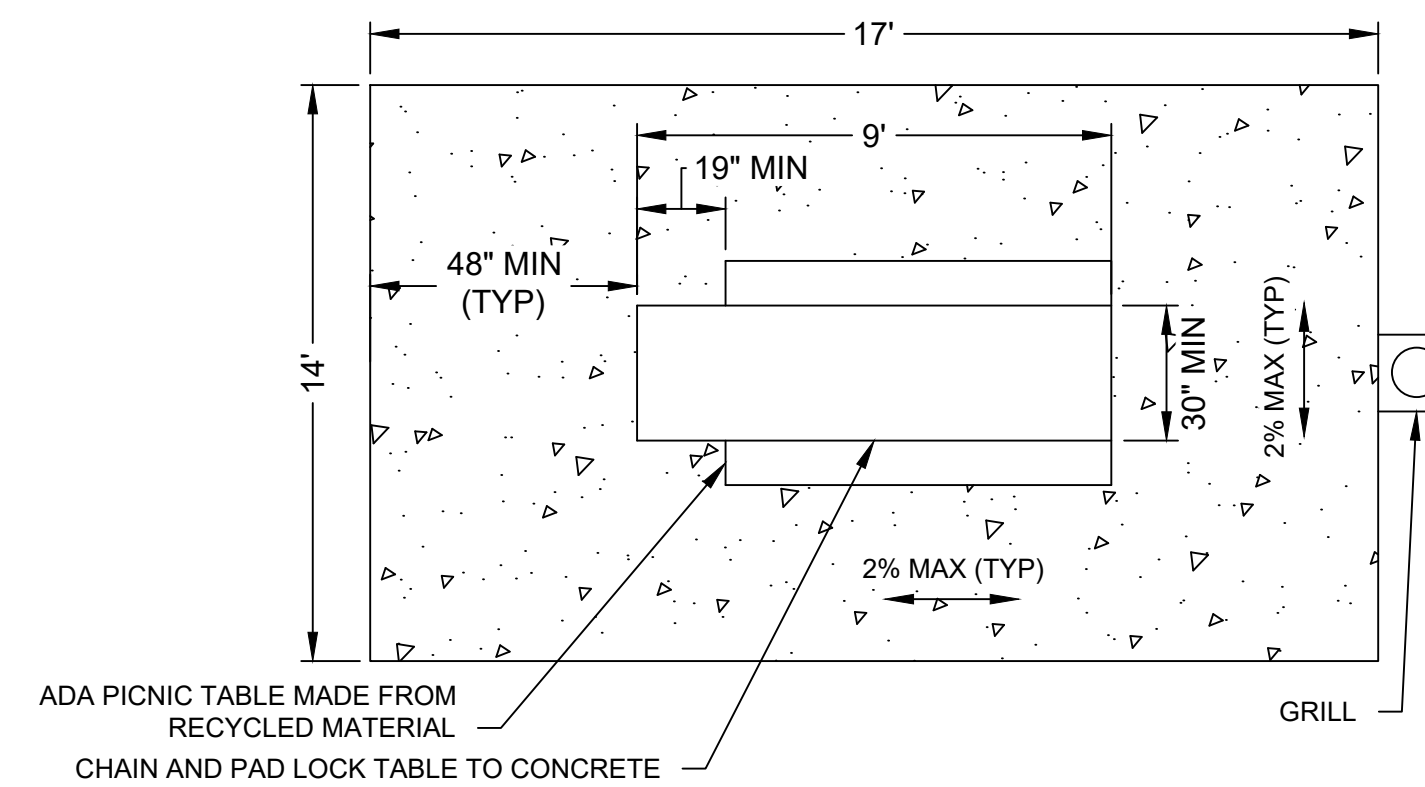
**ASPHALT WALKING PATH**

SCALE: NTS



**CONCRETE PAD SECTION**

NO SCALE



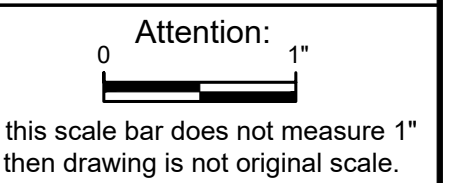
**CONCRETE PAD PLAN**

NO SCALE

NOTES:

1. PICNIC TABLE IS REQUIRED TO HAVE A MINIMUM HEIGHT OF 27 INCHES OF KNEE SPACE AND 9 INCHES OF TOE SPACE.

P.E. No.:	54921
Approved:	GMM
Checked:	GMM
Drawn:	ANC
Designed:	ANC
GEI Project	2102848



NO.	DATE	ISSUE/REVISION	APP
1	7/31/2023	ADDENDUM NO 2	GMM
0	3/24/2022	FOR BID	GMM

SHEET NAME

DETAILS

SHEET NO.

D-01

For Bid