

General

- Location: Jackson Mine Park
- Operating Dates: August 12th, 2022 – August 14th, 2022
- No fires at camp sites
- No open alcohol containers unless in designated area
- No smoking/consumption of marijuana
- Quiet hours from 10:00 PM to 8:00 AM (Midnight – 8AM on night of August 13th)
- No littering
- Must have Ore to Shore registration to reserve campsite
- Heritage Trail and other bike paths in Jackson Mine Park open to the public

Staff

- Campground Manager: Nic Tuma
- 2 members of staff present during the day (7am – Midnight).
- 1 security guard present at night
- Camp Host:
 - Present during the day (7am – Midnight)
 - Check-In Guests
 - Check parking lots for parking permits
 - Patrol campground during the day
- Security:
 - (1) Present 24/7 to patrol camping zone
 - (2) Present on Saturday night (August 13th) to patrol fire area and camping zone
- Cleaning:
 - Clean and re-stock bathrooms daily
 - Empty garbage cans daily
 - Clean porta-potties and check if service needed
 - Dispose of trash in Ore to Shore dumpster
 - Pick-up any trash in parking lots and camp sites
 - Park clean-up after end of event on August 14th

Check-In/Check-Out

- August 12th Check-In: 4:00 PM – 9:30 PM
- August 13th Check-Out: 2:00 PM – 10:00 PM
- August 14th: Check 8:00 AM – 2:00 PM
- Upon Check-In, Guests Will Be Supplied with:
 - Parking Pass
 - Campground Rules
 - Negaunee Shopping & Eating Guide

- Timeline of Events
- Shower Information
- Personal garbage bag

Parking

- Health Department parking lot requirement: Parking space = 1.5 x # of sites
 - 50 sites x 1.5 = **75 parking spaces** required.
 - Parking space size = 9' x 23'
- Signs at parking lot entrances stating parking pass required.
- Parking passes will be distributed upon guest check-in and will be required to be shown in car windshield to park in lot.

Table 1. Campground Parking Capacities

Parking Zone	Car Capacity	Lot Description
1	38	Dirt lot adjacent to pavilion
2	7	Parallel parking near park entrance
3	24	Dirt lot adjacent to Snow St.
4	22	Tobin St. Diagonal Parking
5	30	Senior Center Parking Lot
Total	121	

Camp Sites

- (45) 15'x20' primitive camp sites
- (5) 15'x 20' primitive hammock camp sites
- Maximum 4 people per site
- Maximum of 2 tents per site
- Campground zones will be segregated using rope or temporary fencing
- Site boundaries marked using flags or temporary paint
- Minimum of 6' between each site
- 15' wide walkways to access all sites

Table 2. Campground Site Capacity

Camping Zone	Site Capacity	Description
1	22	Walk-In Tent Camping
2	15	Walk-In Tent Camping
3	8	Walk-In Tent Camping
4	5	Walk-In Hammock Camping

Total	50	
--------------	-----------	--

Service Areas 1, 2, & 3

1. Pavilion
 - Will be reserved by Ore to Shore
 - Open container for guests if possible
 - Campground guests will have access to:
 - Electrical outlets
 - Bathrooms
 - Drinking Water
 - Picnic Tables
2. Check in Area
 - Camp host station
 - Check in table/information table
3. Community Fire Area
 - Used from 8pm to 11:59pm, August 13th (Saturday Night)
 - Fire ring or raised fire apparatus used
 - Local Bar or Brewery to serve alcohol (must apply for permission 10 days prior to event)
 - Acoustic band if possible (no speakers)
4. Porta-Potties and Hand wash station

Facilities

The Michigan health department requires

- 2 unisex privies for every 30 camp sites in a primitive temporary campground
- 1 potable water source for every 50 camp sites
- Sufficient garbage can access emptied weekly

Per this regulation, the Ore to Shore will supply:

(14) Porta Potties (unisex bathrooms)

(1) Hand Wash Station

(1) Potable Water Supply

(10) Garbage cans (emptied daily or as necessary) – (6 supplied by O2S, 4 already present)

The supplied facilities in addition to the Jackson Mine Park Pavilion bathrooms exceeds the health department requirement.

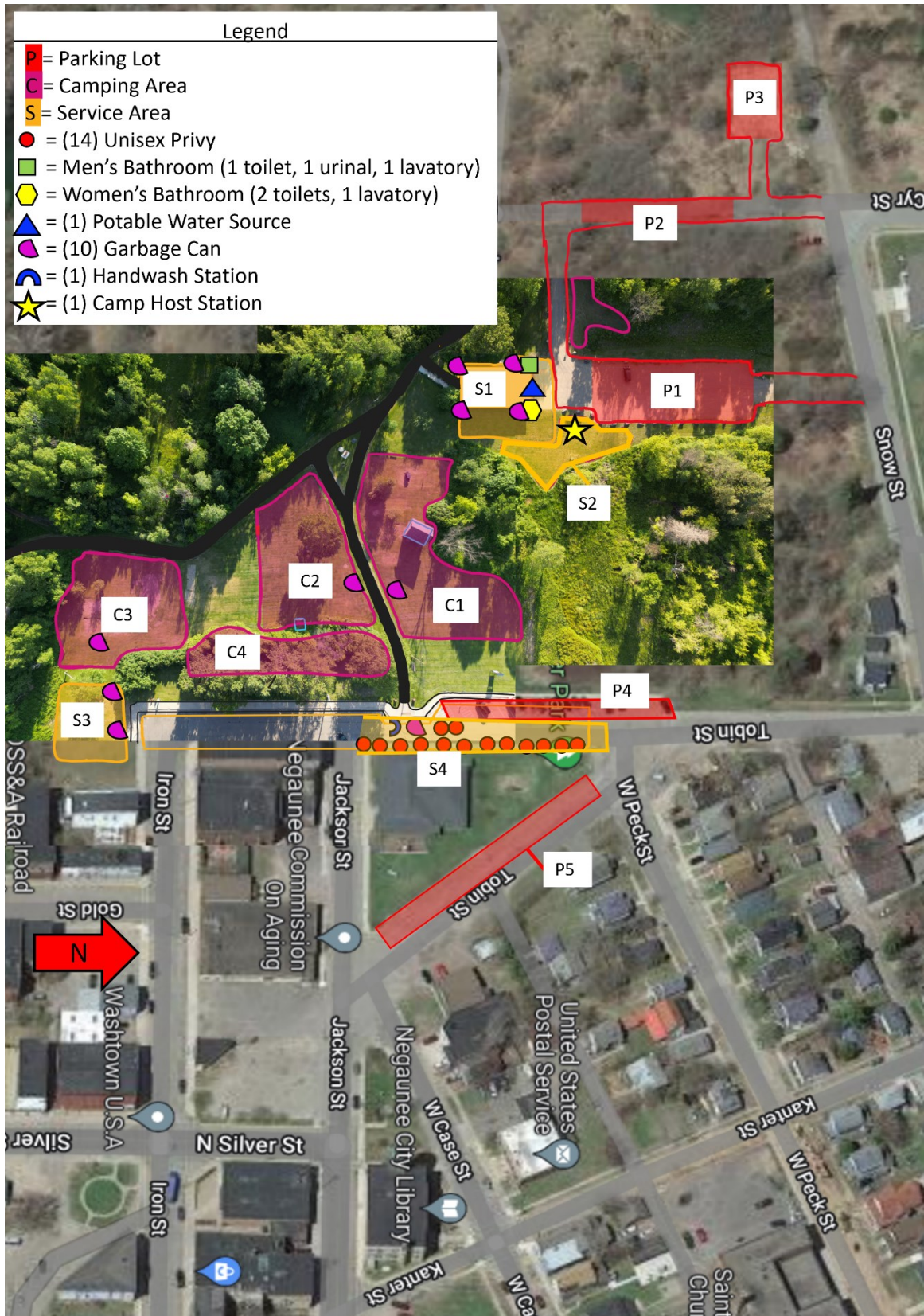


Figure 1. Overall Camp Map

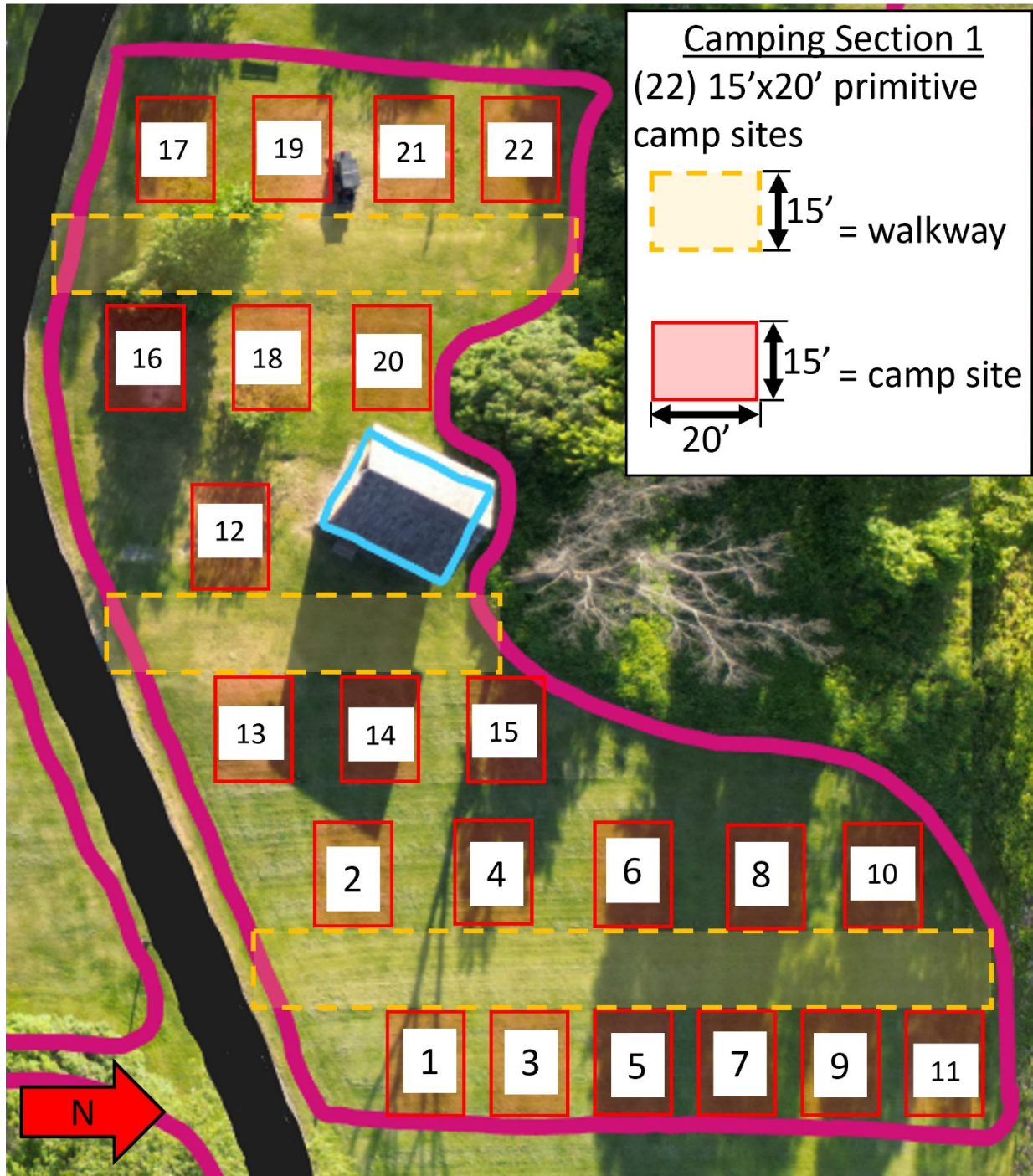


Figure 2. Camping Zone 1: Site Layout



Figure 3. Camping Zone 2: Site Layout



Figure 4. Camping Zone 3: Site Layout



Figure 5. Camping Zone 4: Site Layout

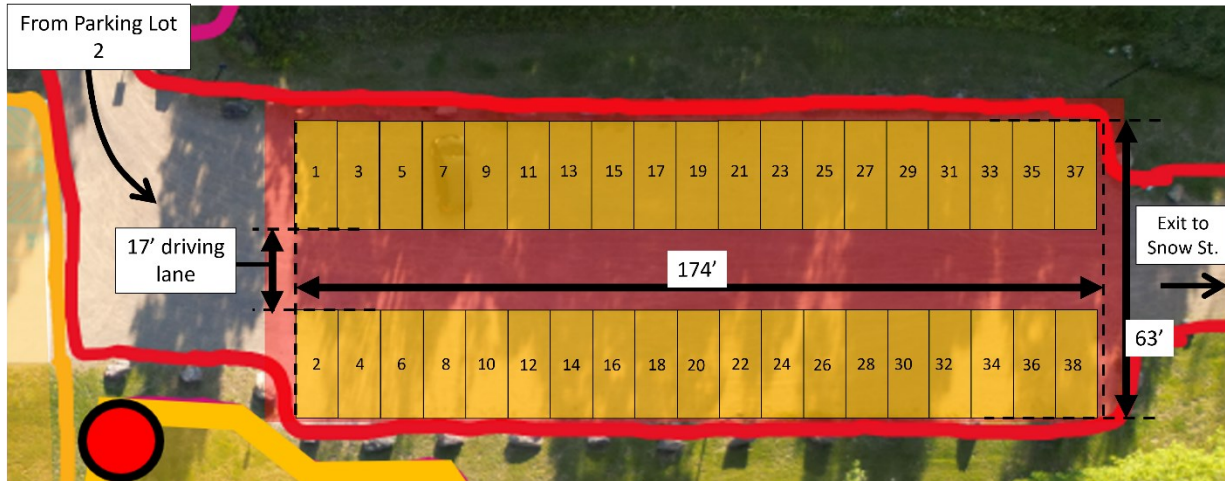


Figure 6. Parking Lot 1 Layout

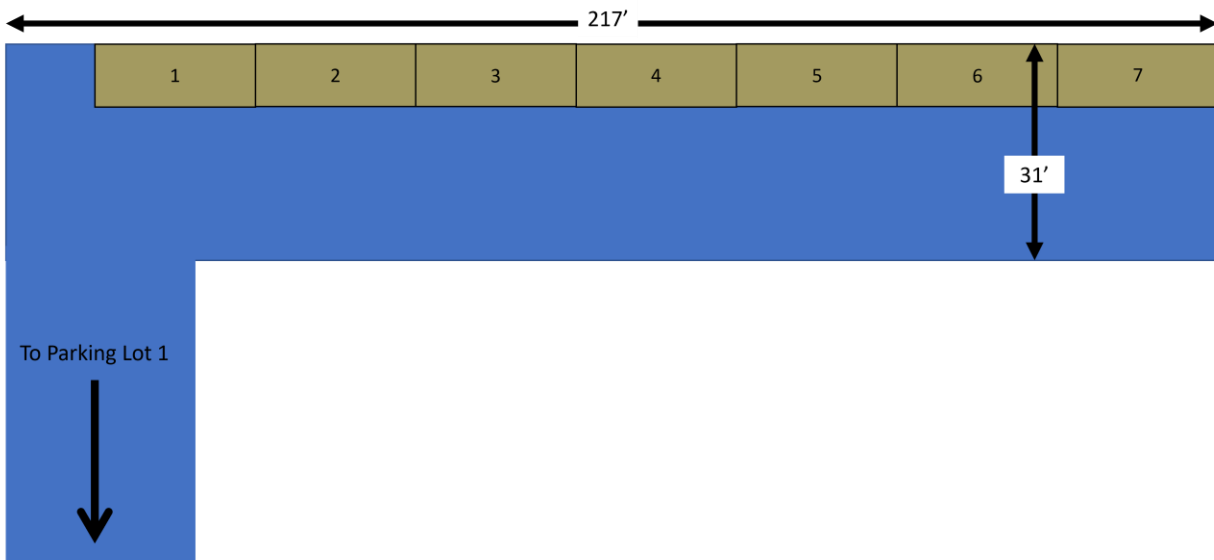


Figure 7. Parking Lot 2 Layout

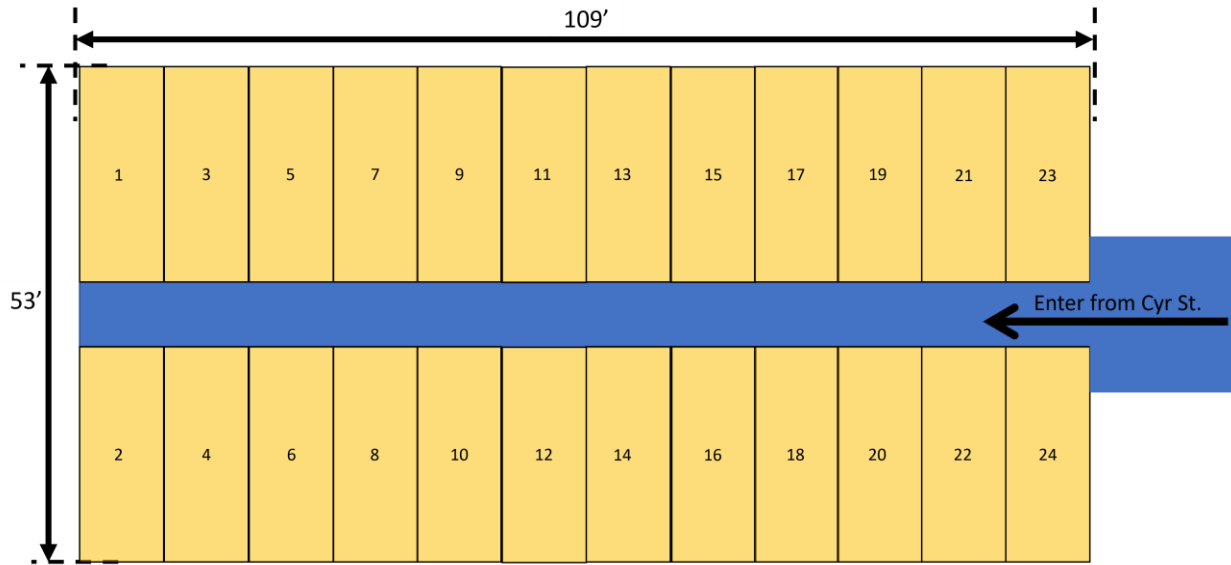


Figure 8. Parking Lot 3 Layout



Figure 9. Parking Lot 4 Layout